

OPERATION **L!STO**

Disaster Preparedness Program – Typhoon Edition

***tamang paghahanda,
tamang aksyon!***



Central Office Disaster Information
Coordinating Center

www.lga.gov.ph/



LGU DISASTER Preparedness Journal

**Checklist of
Minimum Actions
For Mayors**

First Edition (July 2014)

LGU PREPAREDNESS ACTION FLOW

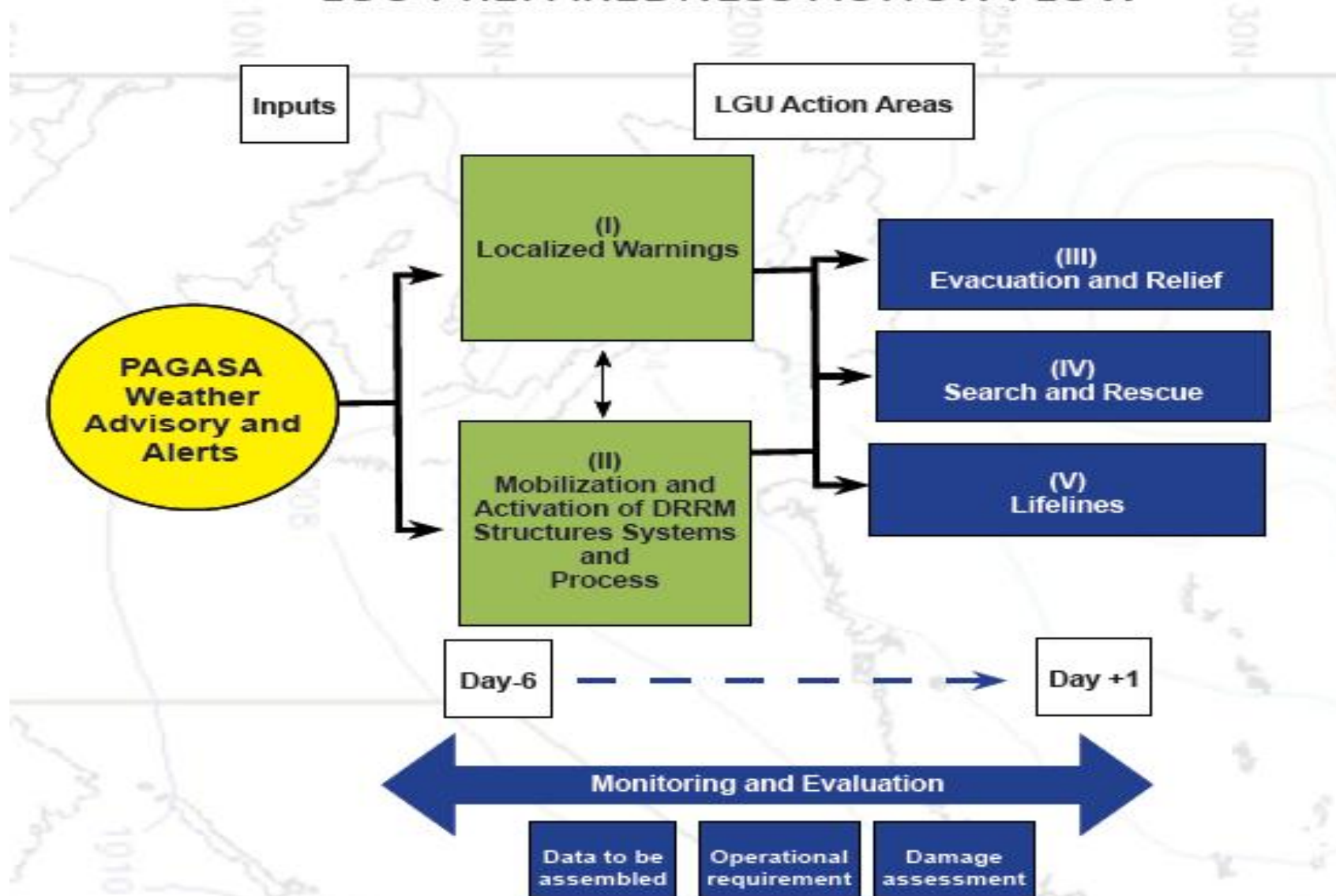
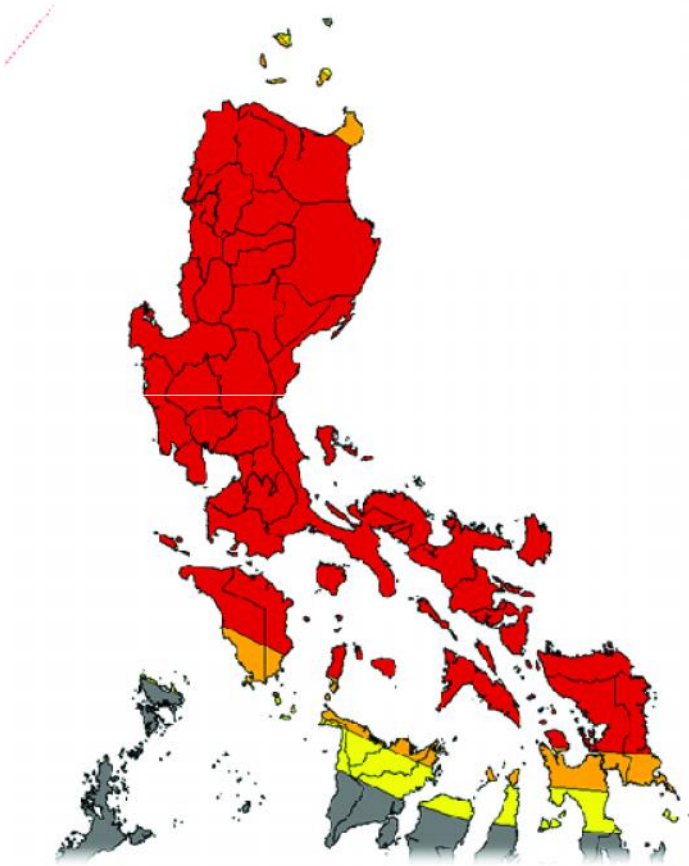


TABLE OF CONTENTS

CONTENT	PAGE
I. Introduction	2
II. Framework	4
III. Glossary of Terms, Acronyms and Abbreviations	5
IV. Checklist	7
A. Early Preparedness Actions	7
1. <i>Overview: DRRM Action Flow for Early Preparedness</i>	8
2. <i>Systems and Structures</i>	9
3. <i>Policies and Plans</i>	10
4. <i>Competency</i>	12
5. <i>Tools and Equipment</i>	13
B. Critical Period Actions	15
1. <i>Overview: DRRM Action Flow During the Critical Period</i>	16
2. <i>Day -6</i>	17
3. <i>Day -5</i>	21
4. <i>Day-4</i>	23
5. <i>Day -3</i>	25
6. <i>Day -2</i>	27
7. <i>Day -1</i>	31
8. <i>Day 0</i>	33
9. <i>Day +1</i>	35
V. Annexes	37
VI. Directory	52

Lessons from Past Typhoons



Glenda, Yolanda, Luis

Nearest Land
1,100KM

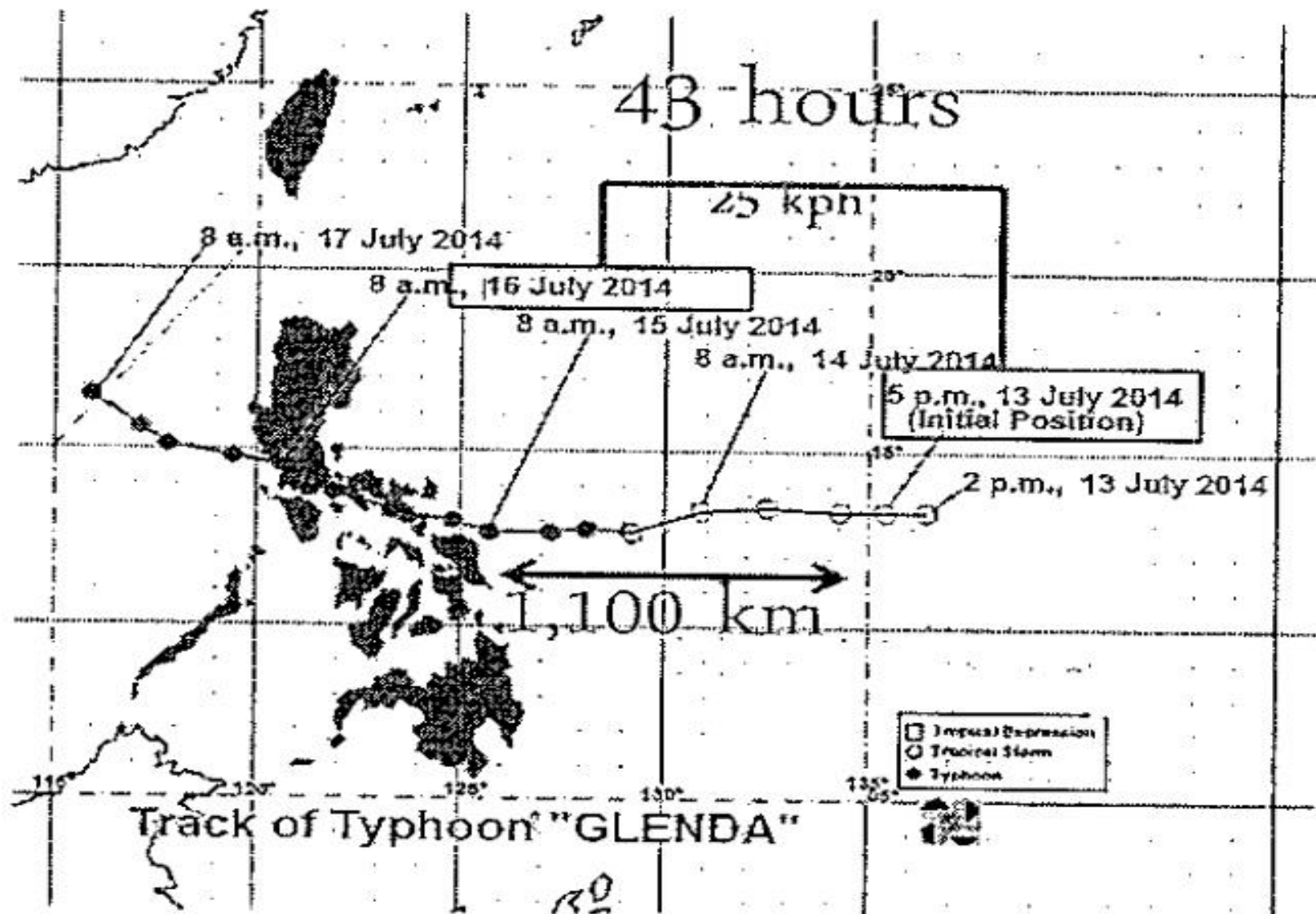
Typhoon Speed
25-35KPH

Is the distance
between the nearest
landmass to the PAR
boundary

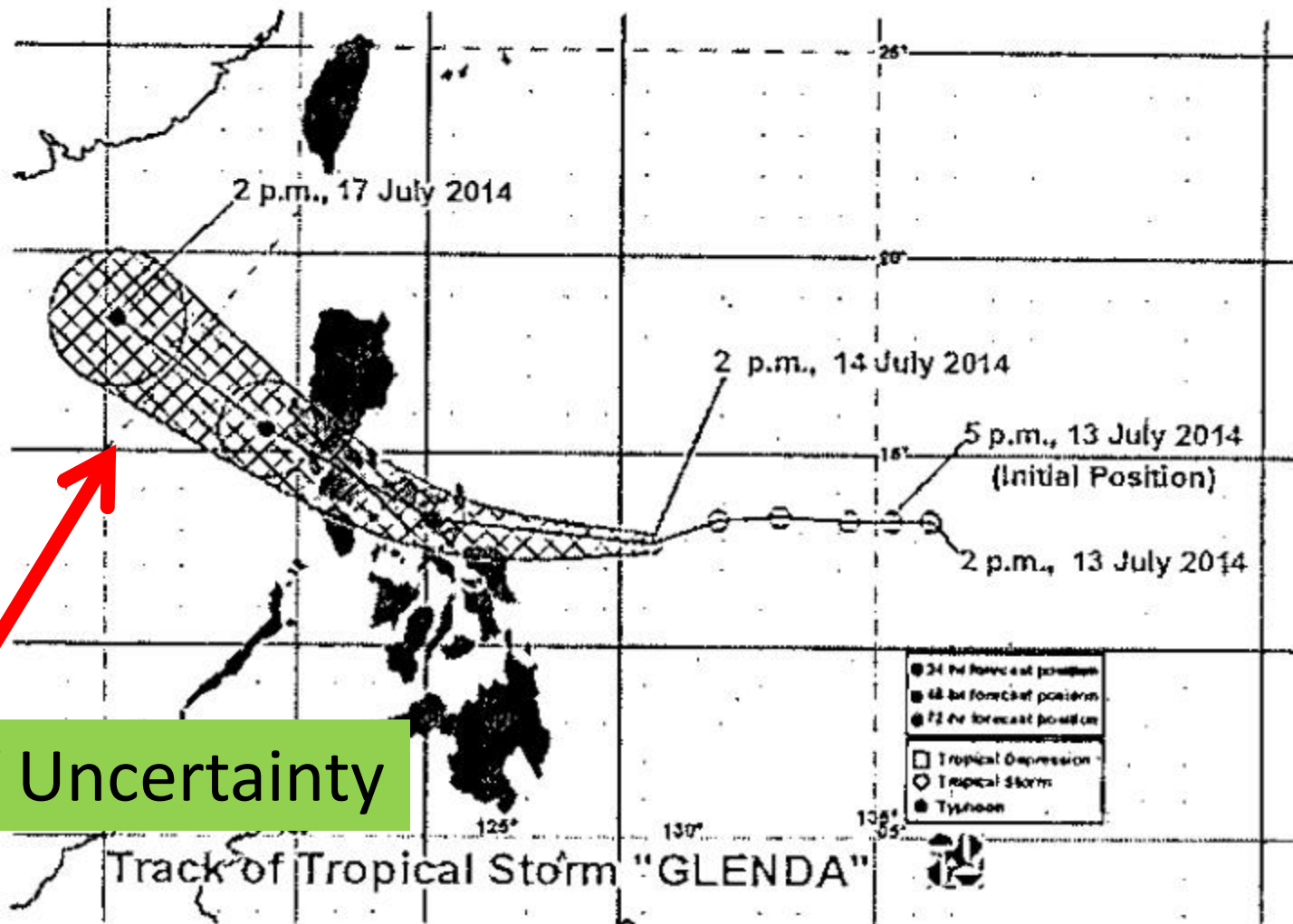
Lead Time of
31-48HRS

A typhoon may travel as fast as
35 kph (Yolanda), giving us 31 hours to prepare;
25 kph (Glenda) giving us 44 hours;
32 kph (Luis) giving us 34 hours.

Lessons from Past Typhoons

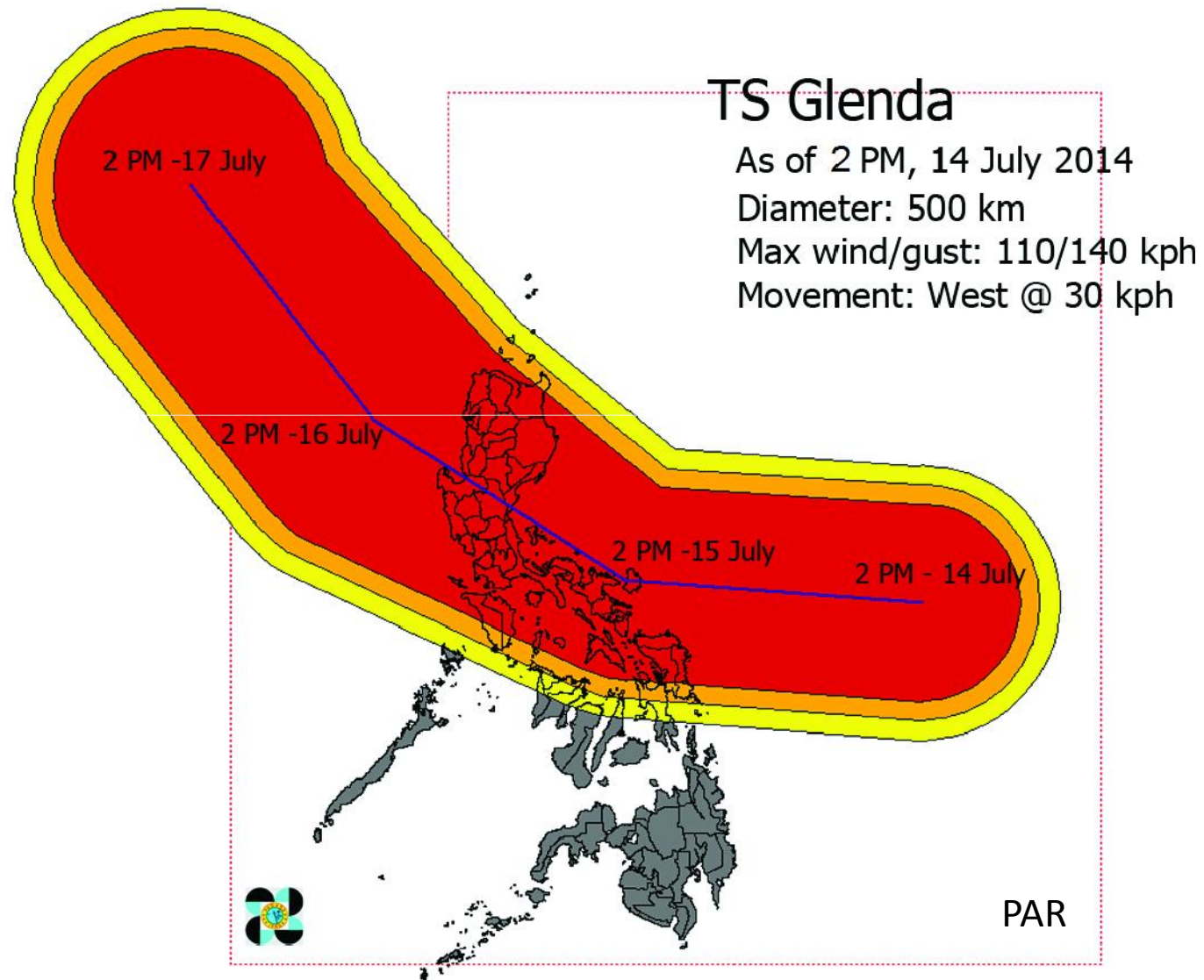


Lessons from Past Typhoons

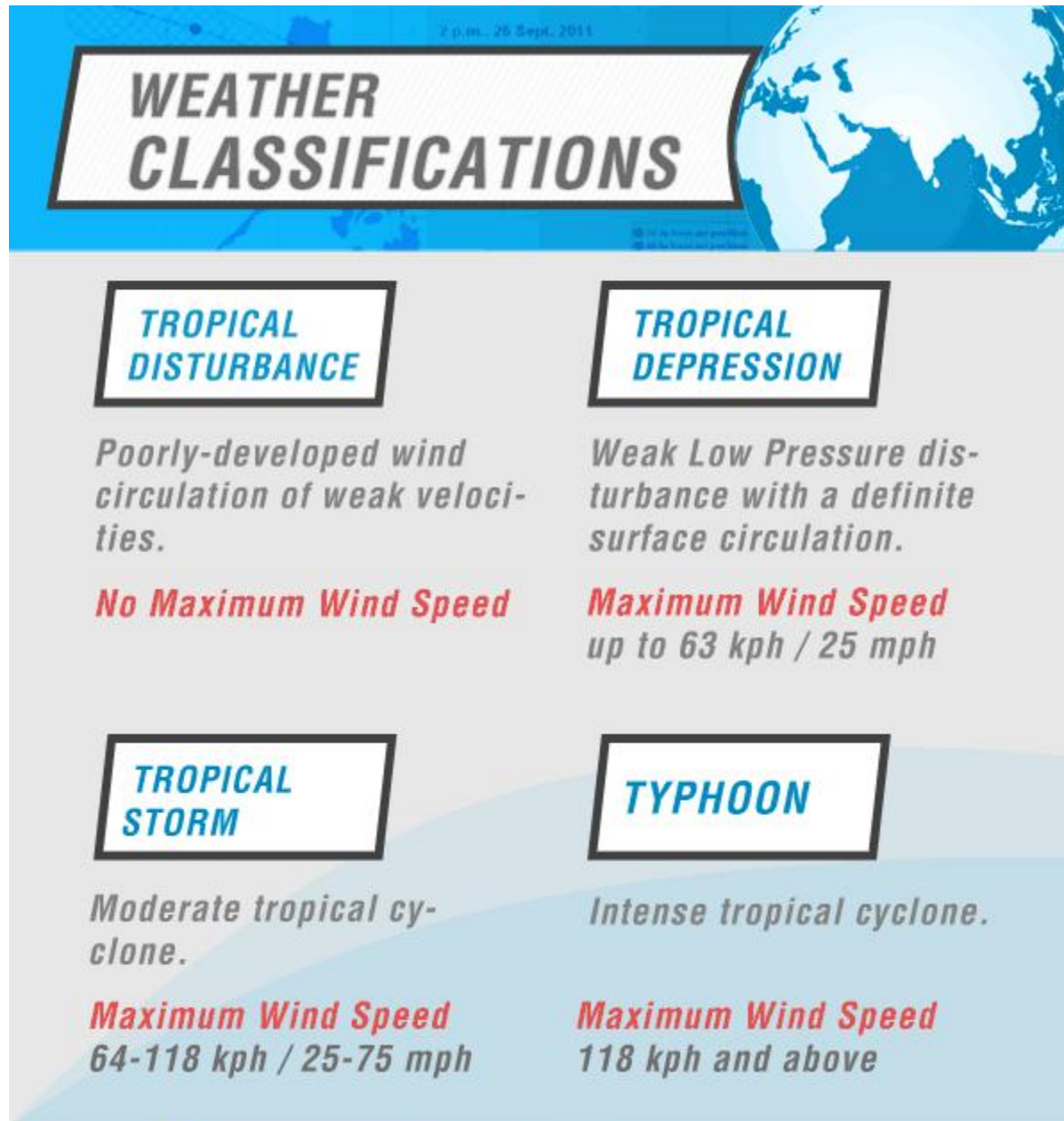


Cone of Uncertainty






Lessons from Past Typhoons



Early Warning Leads to Early Action






Early Warning Leads to Early Action

 PUBLIC STORM WARNING SIGNALS		
	PSWS # 1 <i>Wind Speed</i> 30-60 kph	May be expected in at least 36 hours or intermittent rains
	PSWS # 2 <i>Wind Speed</i> 60-100 kph	May be expected in at least 24 hours
	PSWS # 3 <i>Wind Speed</i> 100-185 kph	May be expected in at least 18 hours
	PSWS # 4 <i>Wind Speed</i> more than 185 kph	May be expected in at least 12 hours





HEAVY RAINFALL WARNING LEVELS

RAINFALL VALUES (mm) FOR METRO MANILA	MEANING	LEVELS
YELLOW RAINFALL ADVISORY Rainfall of 7.5 to 15 mm per hour has fallen or expected to fall and most likely to continue for the next 3 hours.	Community AWARENESS FLOODING is POSSIBLE in low-lying areas and near river channels	Advisory 
ORANGE RAINFALL ADVISORY Rainfall of more than 15mm up to 30mm within 1 hour has fallen or expected to fall or if continuous rainfall for the past 3 hours is more than 45mm to 65mm and most likely to continue for the next 3 hours.	Community PREPAREDNESS FLOODING is THREATENING in low-lying areas and near river channels	Alert 
RED RAINFALL WARNING Rainfall of more than 30mm within 1 hour has fallen or expected to fall or if continuous rainfall for the past 3 hours is more than 65mm and most likely to continue for the next 3 hours.	Community RESPONSE SEVERE FLOODING is EXPECTED Take necessary precautionary measures	Emergency 

Disclaimer: Rainfall threshold values are arbitrary and may vary depending on the area of concern. These will be refined as soon as more data become available.

RED
RAINFALL ADVISORY



More than 30mm rain
observed in 1 hour and expected to
continue in the next 2 hours



Serious flooding expected
in low lying areas

RESPONSE:
EVACUATION

ORANGE
RAINFALL ADVISORY



15-30mm (intense) rain
observed in 1 hour and expected to
continue in the next 2 hours



Flooding is threatening

RESPONSE:
ALERT
for possible evacuation

YELLOW
RAINFALL ADVISORY

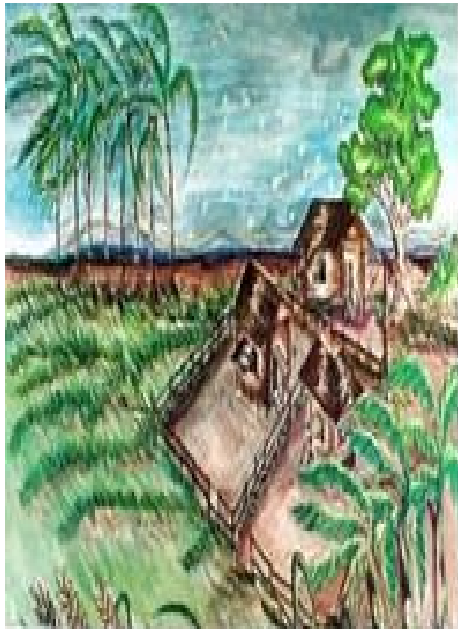


7.5-15mm (heavy) rain
observed in 1 hour and expected to
continue in the next 2 hours

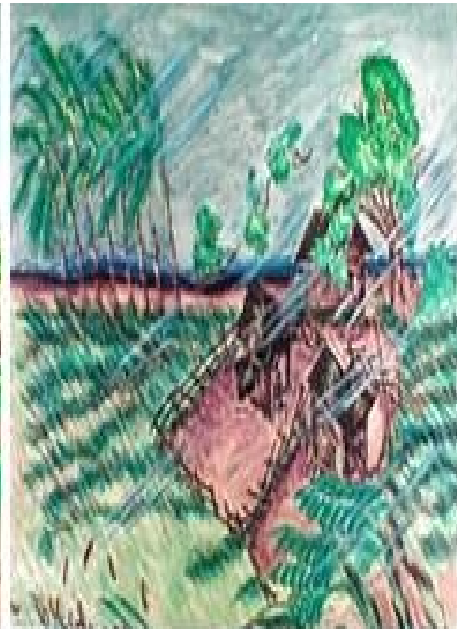


Flooding is possible

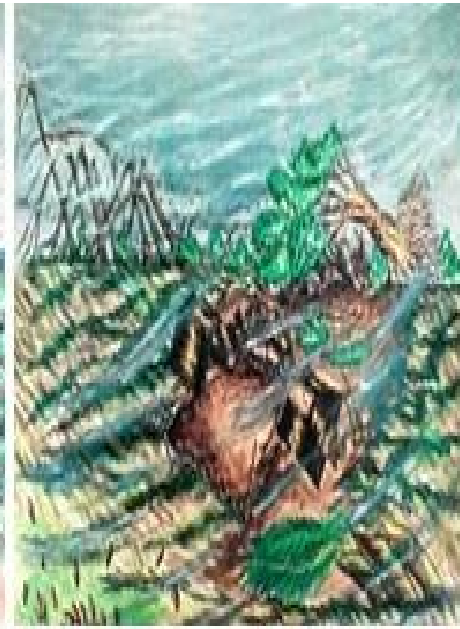
RESPONSE:
MONITOR
the weather condition



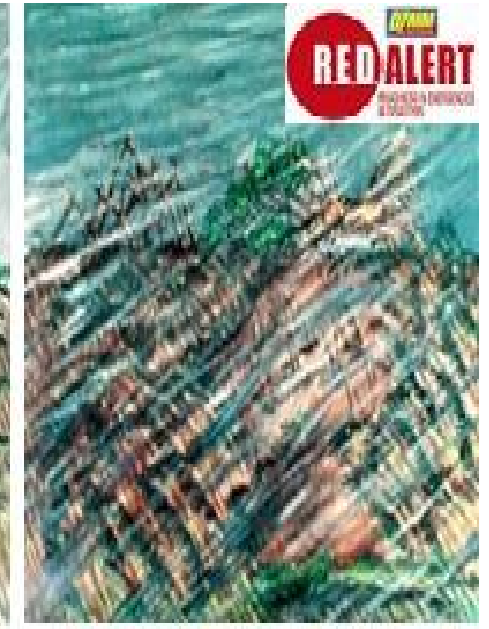
PSWS # 1



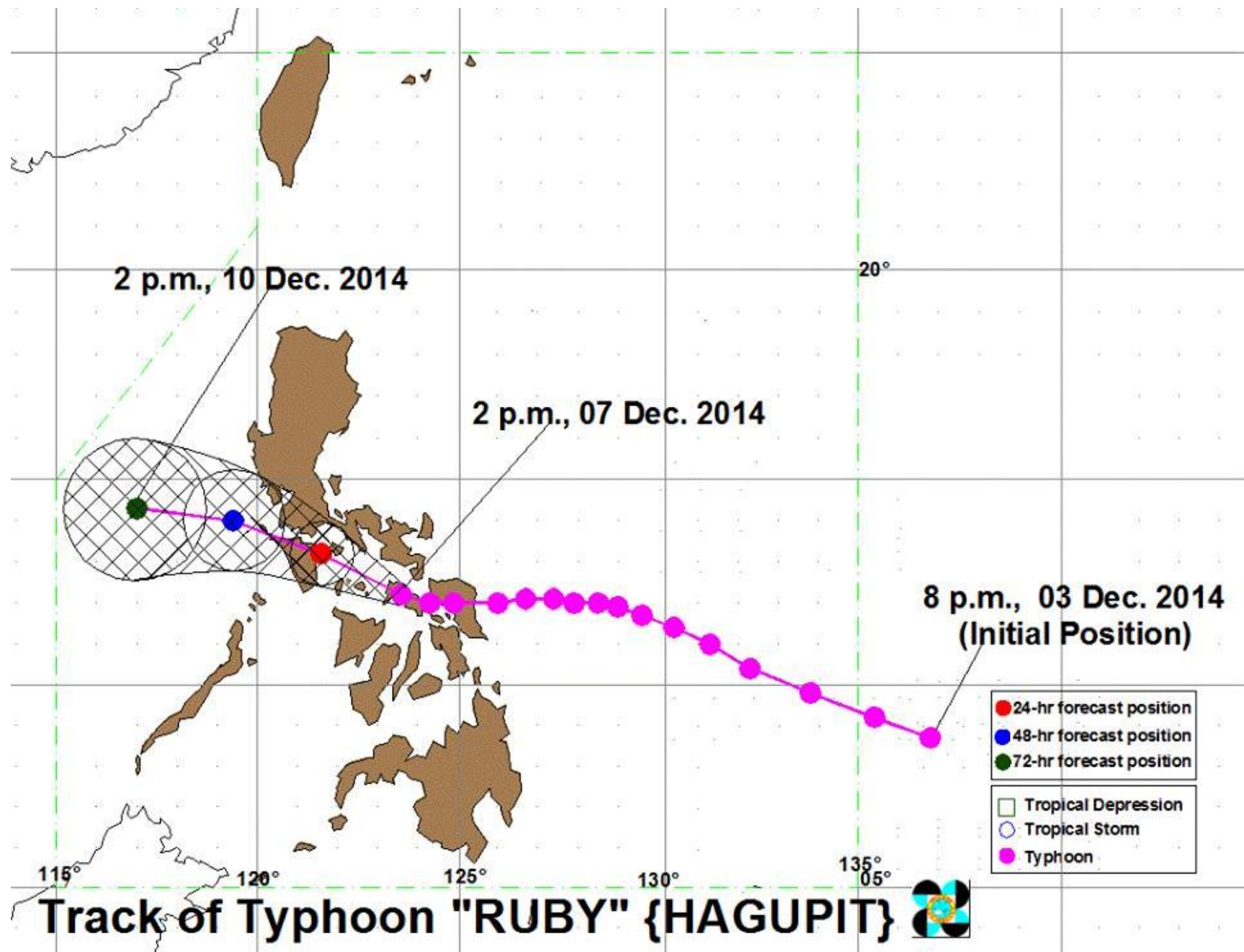
PSWS # 2



PSWS # 3



PSWS # 4



Early Warning Leads to Early Action

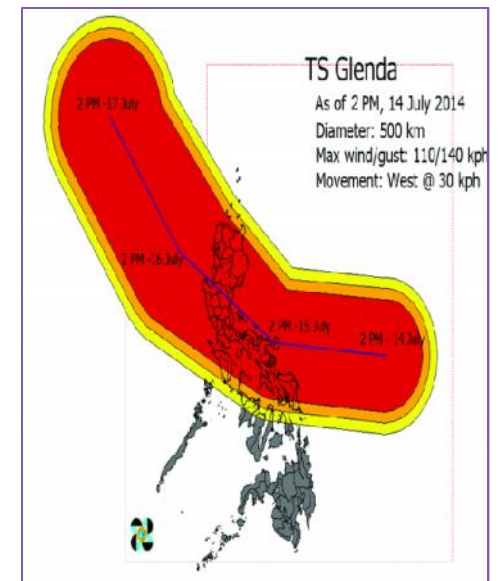
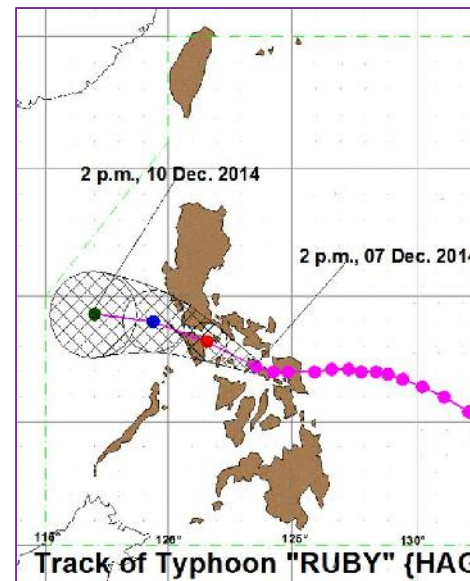
PUBLIC STORM WARNING SIGNALS		
	PSWS # 1 <i>Wind Speed</i> 30-60 kph	May be expected in at least 36 hours or intermittent rains
	PSWS # 2 <i>Wind Speed</i> 60-100 kph	May be expected in at least 24 hours
	PSWS # 3 <i>Wind Speed</i> 100-185 kph	May be expected in at least 18 hours
	PSWS # 4 <i>Wind Speed</i> more than 185 kph	May be expected in at least 12 hours



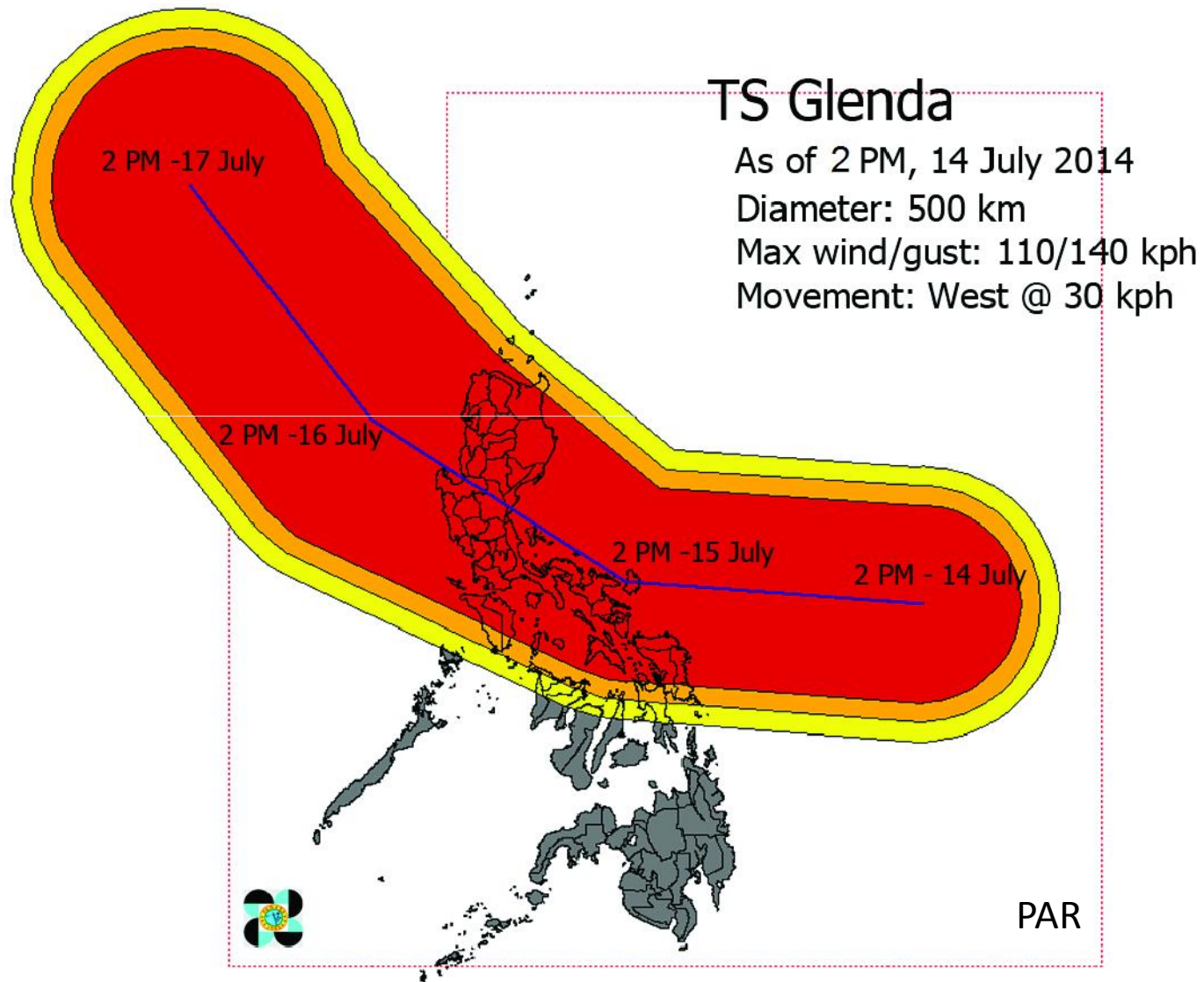
FORECAST/PATH-BASED + SIGNAL + CRITICAL PREPAREDNESS ACTION ADVISORY

DOST-PAGASA + Project NOAH

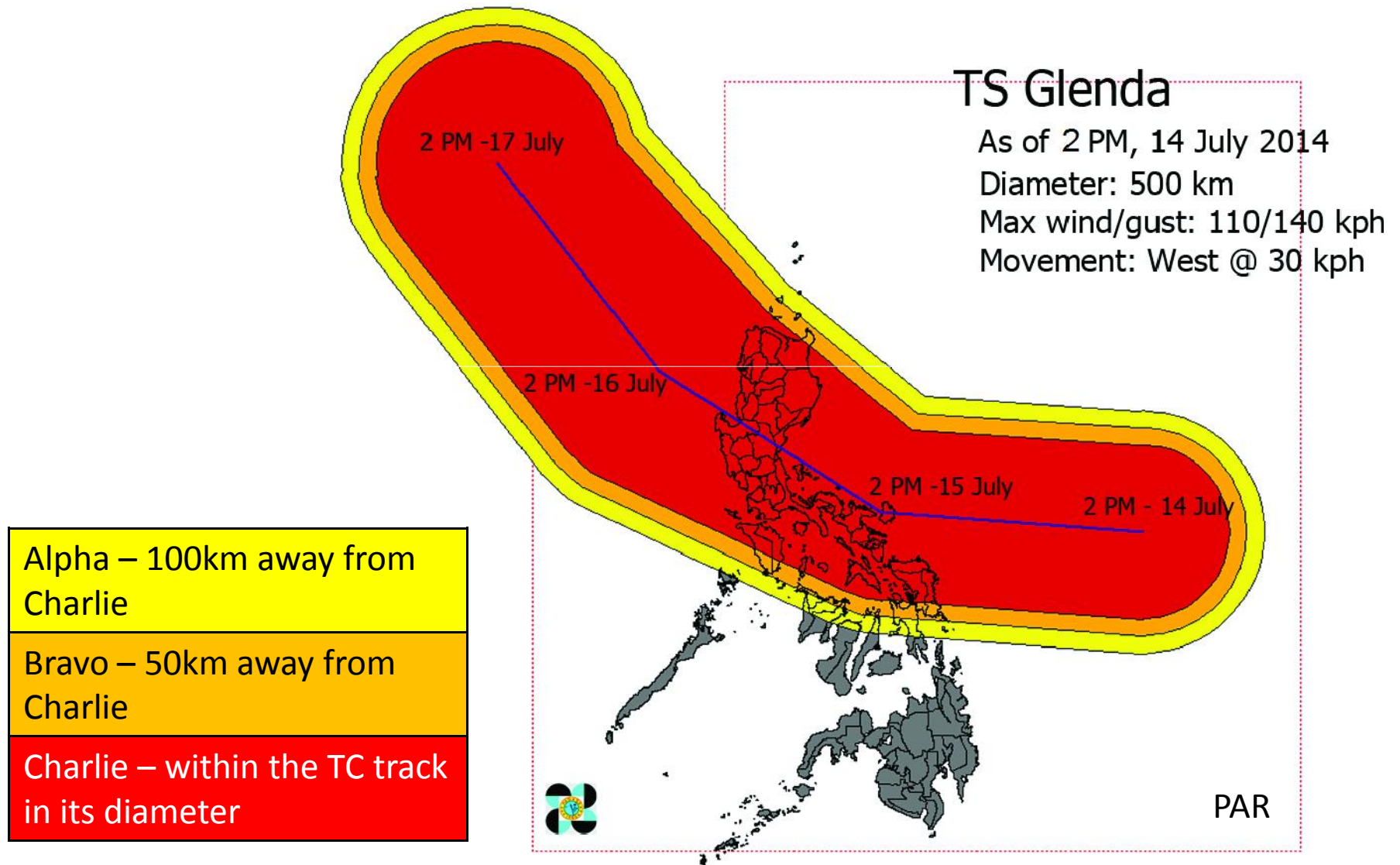
CHARLIE Wind: 120-150kph Rain: 10-30mm/hr Heavy to Intense	BRAVO Wind: 30-60kph Rain: 10-20mm/hr Moderate to Heavy	ALPHA Wind: 30-60kph Rain: 5-10mm/hr Moderate to Heavy
--	---	--



Critical Preparedness Actions



Critical Preparedness Actions



Critical Preparedness Actions



Charlie – within the TC track in its diameter

Wind: 120-150kph

Rain: 10-30mm/hr

Heavy to Intense

Potential Impacts:

- Comparable to PITANG 1970
- Heavy Damage to Agriculture
- Travel by Land, Air and Sea is dangerous
- Some Trees may be uprooted
- Moderate to Heavy disruption of electrical power

Bravo – 50km away from Charlie

Wind: 30-60kph

Rain: 10-20mm/hr

Moderate to Heavy

Potential Impacts:

- Moderate Damage to Agriculture
- Travel by Land, Air and Sea is Risky
- Few Trees may be uprooted
- Some iron roofing may fall off

Alpha – 100km away from Charlie

Wind: 30-60kph

Rain: 5-10mm/hr

Moderate to Heavy

Critical Preparedness Actions



Charlie – within the TC track in its diameter

Wind: 120-150kph

Rain: 10-30mm/hr

Heavy to Intense

Abra, Albay, Apayao, Aurora, Bataan, Batangas, Benguet, Biliran, Bulacan, Cagayan, Camarines Norte/Sur, Catanduanes, Cavite, E. Samar, Ifugao, Ilocos Norte/Sur, Isabela, Kalinga, La Union, Laguna, Leyte, Marinduque, Masbate, Metro Manila, Mt. Province, N. Samar, Nueva Ecija/Viscaya, Occ. Mindoro, Pampanga, Pangasinan, Quezon, Quirino, Rizal Romblon, Samar, Sorsogon, Tarlac, Zambales

Bravo – 50km away from Charlie

Wind: 30-60kph

Rain: 10-20mm/hr

Moderate to Heavy

Camarines Norte/Sur, Catanduanes, La Union, Mt. Province, Nueva Ecija, Pangasinan, Quezon

Alpha – 100km away from Charlie

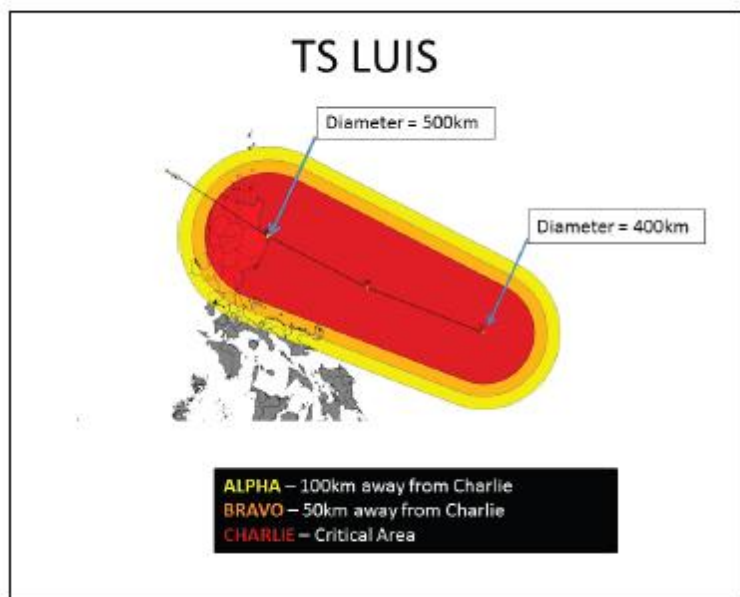
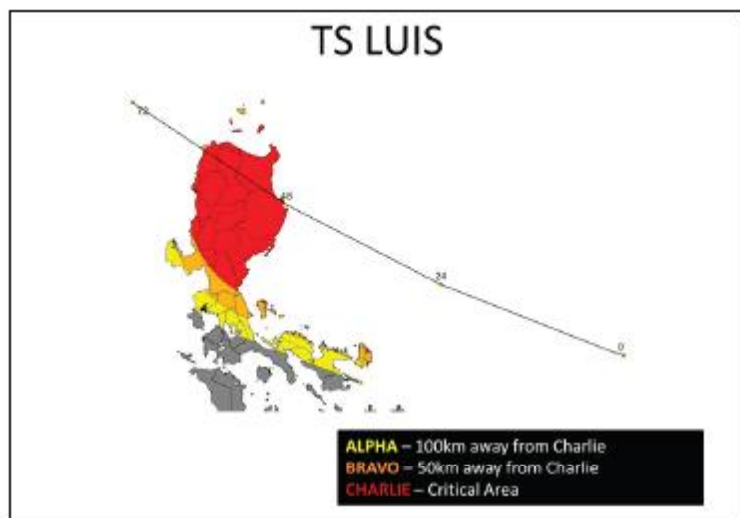
Wind: 30-60kph

Rain: 5-10mm/hr

Moderate to Heavy

Masbate, Mt. Province, Tarlac

Advisory for Affected Provinces



CRITICAL AREAS			
ALERT LEVEL		PROVINCES	POTENTIAL IMPACTS
ALERT LEVEL C	RAIN	<ul style="list-style-type: none"> Abra, Apayao Aurora, Benguet Cagayan, Ifugao Ilocos Norte & Sur Isabela, Kalinga La Union Mountain Province Nueva Vizcaya Pangasinan Quezon Quirino 	<ul style="list-style-type: none"> Comparable to PITANG 1970 Heavy damage to agriculture Travel by land, sea and air is dangerous
	WIND		<ul style="list-style-type: none"> Some large trees may be uprooted Moderate to heavy disruption of electrical power
ALERT LEVEL B	RAIN	<ul style="list-style-type: none"> Bulacan, Nueva Ecija Camarines Norte & Sur Catanduanes Pampanga Rizal 	<ul style="list-style-type: none"> Moderate damage to agriculture Travel by all types of sea vessels is risky Travel by aircrafts is risky
	WIND		<ul style="list-style-type: none"> Few large trees may be uprooted Some iron roofing may fall off
ALERT LEVEL A	<ul style="list-style-type: none"> RAIN 5-10 mm/hr Moderate to Heavy 	<ul style="list-style-type: none"> Albay Bataan Cagayan Cavite Laguna Metro Manila 	

Note that Advisory will be presented in this Format



CHARLIE

MINIMUM CRITICAL PREPARATION



UPON ALERT

1. Issue directive
(Box A)

BEFORE (48 HOURS)

Check List of Resources
Needed/Box C, D, E

DURING AND AFTER



BRAVO

MINIMUM CRITICAL PREPARATION



UPON ALERT

1. Issue directive
(Box A)

BEFORE (48 HOURS)

Check List of Resources
Needed/Box C, D, E

DURING AND AFTER



ALPHA

MINIMUM CRITICAL PREPARATION



UPON ALERT

1) Issue Directives

BEFORE (48 HOURS)

DURING AND AFTER



TYPHOON INFORMATION MINIMUM CRITICAL PREPARATION

TYPHOON NAME:

WIND SPEED:

PATH:

RADIUS:

SIGNAL NO.:



local area map

EMERGENCY NUMBERS



National Disaster Risk Reduction and
Management Council (NDRRMC)
(02) 811-1428 (02) 812-1668
(02) 812-1668 (02) 811-1621 to 16
www.ndrrmc.gov.ph



Department of Social Welfare and
Development (DSWD)
(02) 851-3681
www.dswd.gov.ph



Philippine Microphone Corporation
(PMC)
(02) 121-1681 loc. 1211/1212
(02) 121-1681 - Director
(02) 432-8026
www.pmc.gov.ph



Philippine Coast Guard
(PCG)
(02) 121-1681 loc. 1211/1212
(02) 121-1681 - Director
www.pcg.gov.ph



Department of the Interior and
Local Government
(DILG)
(02) 121-1681 loc. 1211/1212
www.dilg.gov.ph



Armed Forces of the Philippines
(AFP)
(02) 121-1681 loc. 1211/1212
www.afp.gov.ph



Central Office Disaster Information
Coordinating Center
(CO-DICC)
(02) 121-1681
(02) 121-1681
www.coodicc.gov.ph



Philippine National Red Cross
(PNRC)
(02) 121-1681 / Hotline - 142
www.pnrc.org.ph



Public Affair and
Communication Service
(PACS)
(02) 121-1681
(02) 121-1681
www.pacs.gov.ph

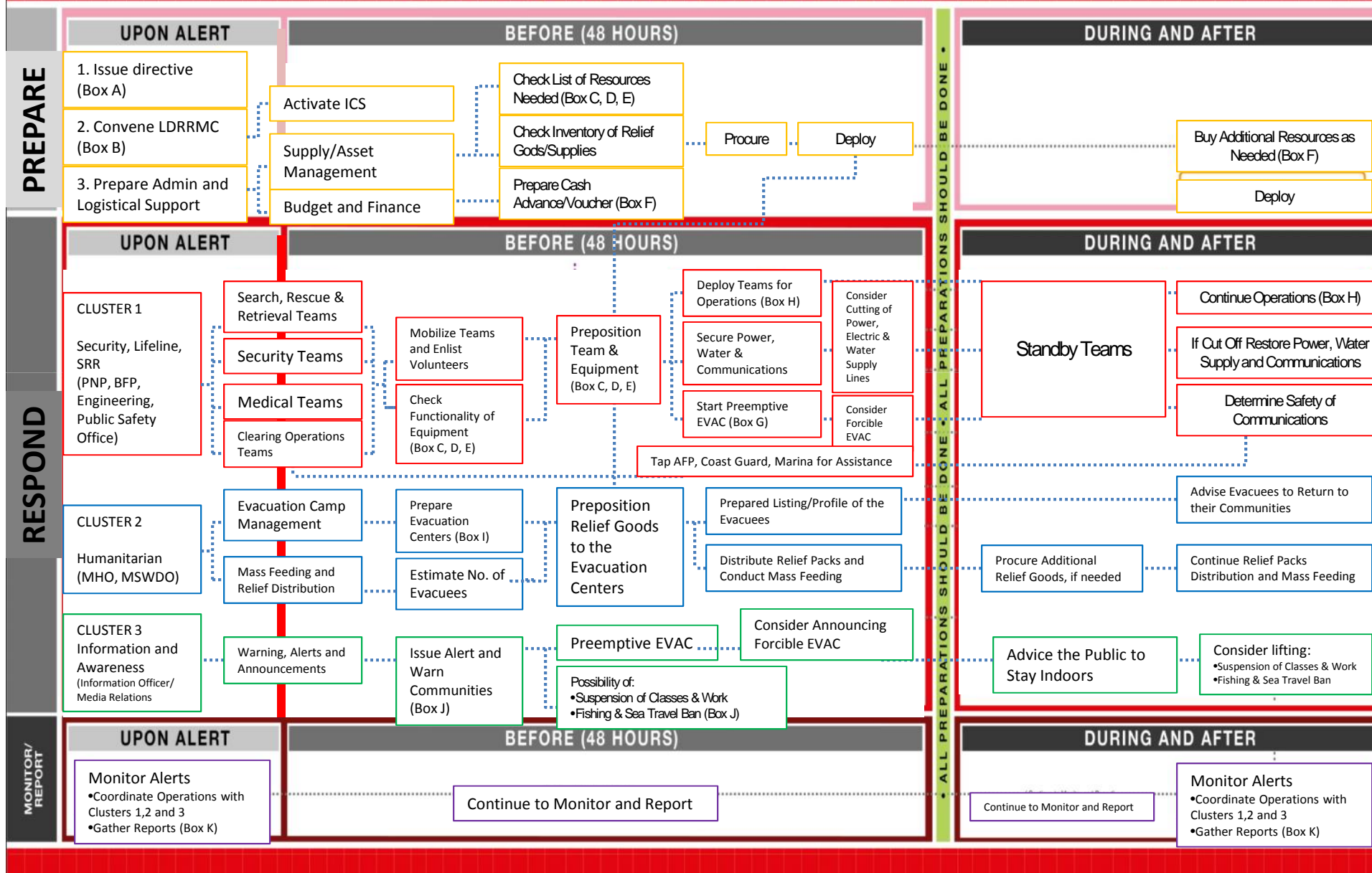


Bureau of Fire Protection
(BFP)
(02) 4362111 - BFP
(02) 4362111-115/116 (General)
www.bfp.gov.ph



CHARLIE

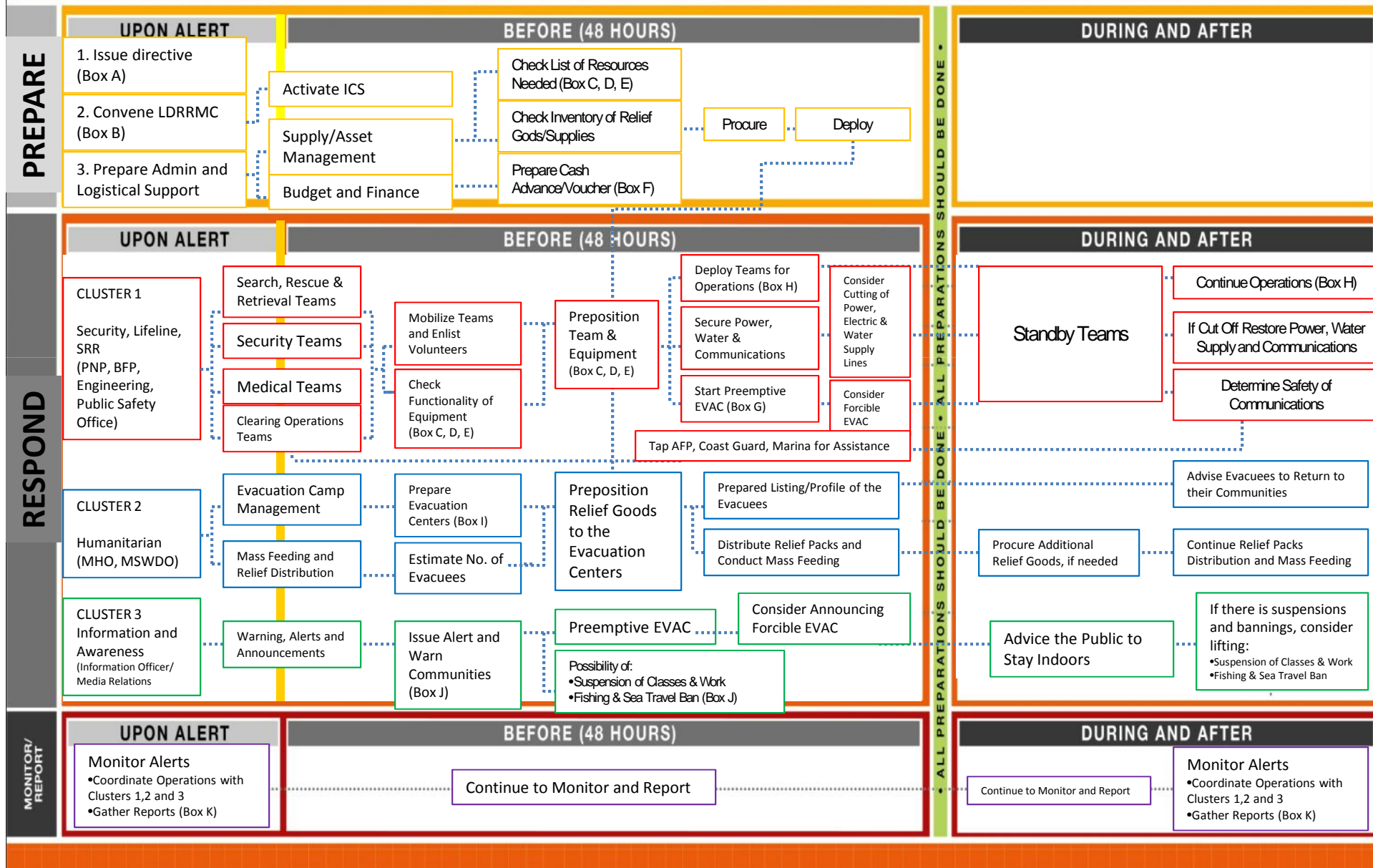
MINIMUM CRITICAL PREPARATION





BRAVO

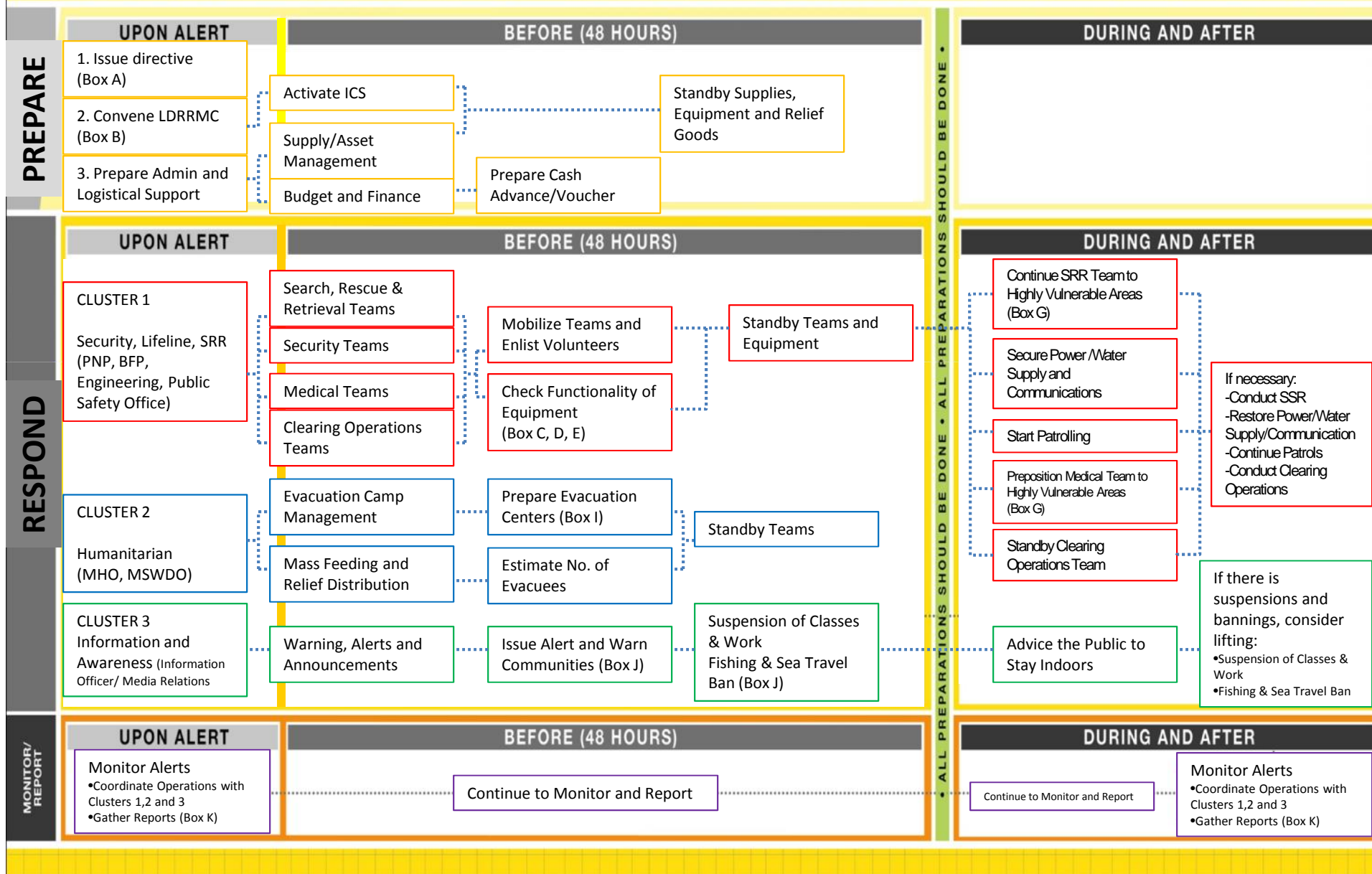
MINIMUM CRITICAL PREPARATION





ALPHA

MINIMUM CRITICAL PREPARATION





TYPHOON INFORMATION MINIMUM CRITICAL PREPARATION

TYPHOON NAME:

WIND SPEED:

PATH:

RADIUS:

SIGNAL NO.:

RAINFALL:

SPECIAL WARNINGS:



local area map

EMERGENCY NUMBERS

 National Disaster Risk Reduction and Management Council (NDRRMC) (02) 711-1688 (02) 712-1688 (02) 712-2000 (02) 711-1881 to 1884 www.ndrrmc.gov.ph	 Department of Social Welfare and Development (DSWD) (02) 857-8891 www.dswd.gov.ph
 Philippine Atmospheric Geophysical and Astronomical Administration (PAGASA) (02) 434-8026 www.pagasa.dost.gov.ph	 Philippine Coast Guard (PCG) (02) 127-6441 Loc. 6294/6295 (02) 126-1988 (02) 126-1989 www.coastguard.gov.ph
 Department of the Interior and Local Government (DILG) (02) 105-6550 to 6553 www.dilg.gov.ph	 Armed Forces of the Philippines (AFP) (02) 340-8555 Loc. 4129 www.afp.gov.ph
 Central Office Disaster Information Center (CO-DIC) (02) 526-0000 (02) 526-7240	 Philippine National Red Cross (PNRC) (02) 102-4800 / Helpline - 143 www.redcross.org.ph
 Public Affair and Communication Service (PACS) (02) 4082810 - 8101 (02) 4082811 - 8102 (02) 4082812 - 8103 (02) 4082813 - 8104 (02) 4082814 - 8105 (02) 4082815 - 8106 (02) 4082816 - 8107 (02) 4082817 - 8108 (02) 4082818 - 8109 (02) 4082819 - 8110 (02) 4082820 - 8111 (02) 4082821 - 8112 (02) 4082822 - 8113 (02) 4082823 - 8114 (02) 4082824 - 8115 (02) 4082825 - 8116 (02) 4082826 - 8117 (02) 4082827 - 8118 (02) 4082828 - 8119 (02) 4082829 - 8120 (02) 4082830 - 8121 (02) 4082831 - 8122 (02) 4082832 - 8123 (02) 4082833 - 8124 (02) 4082834 - 8125 (02) 4082835 - 8126 (02) 4082836 - 8127 (02) 4082837 - 8128 (02) 4082838 - 8129 (02) 4082839 - 8130 (02) 4082840 - 8131 (02) 4082841 - 8132 (02) 4082842 - 8133 (02) 4082843 - 8134 (02) 4082844 - 8135 (02) 4082845 - 8136 (02) 4082846 - 8137 (02) 4082847 - 8138 (02) 4082848 - 8139 (02) 4082849 - 8140 (02) 4082850 - 8141 (02) 4082851 - 8142 (02) 4082852 - 8143 (02) 4082853 - 8144 (02) 4082854 - 8145 (02) 4082855 - 8146 (02) 4082856 - 8147 (02) 4082857 - 8148 (02) 4082858 - 8149 (02) 4082859 - 8150 (02) 4082860 - 8151 (02) 4082861 - 8152 (02) 4082862 - 8153 (02) 4082863 - 8154 (02) 4082864 - 8155 (02) 4082865 - 8156 (02) 4082866 - 8157 (02) 4082867 - 8158 (02) 4082868 - 8159 (02) 4082869 - 8160 (02) 4082870 - 8161 (02) 4082871 - 8162 (02) 4082872 - 8163 (02) 4082873 - 8164 (02) 4082874 - 8165 (02) 4082875 - 8166 (02) 4082876 - 8167 (02) 4082877 - 8168 (02) 4082878 - 8169 (02) 4082879 - 8170 (02) 4082880 - 8171 (02) 4082881 - 8172 (02) 4082882 - 8173 (02) 4082883 - 8174 (02) 4082884 - 8175 (02) 4082885 - 8176 (02) 4082886 - 8177 (02) 4082887 - 8178 (02) 4082888 - 8179 (02) 4082889 - 8180 (02) 4082890 - 8181 (02) 4082891 - 8182 (02) 4082892 - 8183 (02) 4082893 - 8184 (02) 4082894 - 8185 (02) 4082895 - 8186 (02) 4082896 - 8187 (02) 4082897 - 8188 (02) 4082898 - 8189 (02) 4082899 - 8190 (02) 4082900 - 8191 (02) 4082901 - 8192 (02) 4082902 - 8193 (02) 4082903 - 8194 (02) 4082904 - 8195 (02) 4082905 - 8196 (02) 4082906 - 8197 (02) 4082907 - 8198 (02) 4082908 - 8199 (02) 4082909 - 8200 (02) 4082910 - 8201 (02) 4082911 - 8202 (02) 4082912 - 8203 (02) 4082913 - 8204 (02) 4082914 - 8205 (02) 4082915 - 8206 (02) 4082916 - 8207 (02) 4082917 - 8208 (02) 4082918 - 8209 (02) 4082919 - 8210 (02) 4082920 - 8211 (02) 4082921 - 8212 (02) 4082922 - 8213 (02) 4082923 - 8214 (02) 4082924 - 8215 (02) 4082925 - 8216 (02) 4082926 - 8217 (02) 4082927 - 8218 (02) 4082928 - 8219 (02) 4082929 - 8220 (02) 4082930 - 8221 (02) 4082931 - 8222 (02) 4082932 - 8223 (02) 4082933 - 8224 (02) 4082934 - 8225 (02) 4082935 - 8226 (02) 4082936 - 8227 (02) 4082937 - 8228 (02) 4082938 - 8229 (02) 4082939 - 8230 (02) 4082940 - 8231 (02) 4082941 - 8232 (02) 4082942 - 8233 (02) 4082943 - 8234 (02) 4082944 - 8235 (02) 4082945 - 8236 (02) 4082946 - 8237 (02) 4082947 - 8238 (02) 4082948 - 8239 (02) 4082949 - 8240 (02) 4082950 - 8241 (02) 4082951 - 8242 (02) 4082952 - 8243 (02) 4082953 - 8244 (02) 4082954 - 8245 (02) 4082955 - 8246 (02) 4082956 - 8247 (02) 4082957 - 8248 (02) 4082958 - 8249 (02) 4082959 - 8250 (02) 4082960 - 8251 (02) 4082961 - 8252 (02) 4082962 - 8253 (02) 4082963 - 8254 (02) 4082964 - 8255 (02) 4082965 - 8256 (02) 4082966 - 8257 (02) 4082967 - 8258 (02) 4082968 - 8259 (02) 4082969 - 8260 (02) 4082970 - 8261 (02) 4082971 - 8262 (02) 4082972 - 8263 (02) 4082973 - 8264 (02) 4082974 - 8265 (02) 4082975 - 8266 (02) 4082976 - 8267 (02) 4082977 - 8268 (02) 4082978 - 8269 (02) 4082979 - 8270 (02) 4082980 - 8271 (02) 4082981 - 8272 (02) 4082982 - 8273 (02) 4082983 - 8274 (02) 4082984 - 8275 (02) 4082985 - 8276 (02) 4082986 - 8277 (02) 4082987 - 8278 (02) 4082988 - 8279 (02) 4082989 - 8280 (02) 4082990 - 8281 (02) 4082991 - 8282 (02) 4082992 - 8283 (02) 4082993 - 8284 (02) 4082994 - 8285 (02) 4082995 - 8286 (02) 4082996 - 8287 (02) 4082997 - 8288 (02) 4082998 - 8289 (02) 4082999 - 8290 (02) 4083000 - 8291 (02) 4083001 - 8292 (02) 4083002 - 8293 (02) 4083003 - 8294 (02) 4083004 - 8295 (02) 4083005 - 8296 (02) 4083006 - 8297 (02) 4083007 - 8298 (02) 4083008 - 8299 (02) 4083009 - 8300 (02) 4083010 - 8301 (02) 4083011 - 8302 (02) 4083012 - 8303 (02) 4083013 - 8304 (02) 4083014 - 8305 (02) 4083015 - 8306 (02) 4083016 - 8307 (02) 4083017 - 8308 (02) 4083018 - 8309 (02) 4083019 - 8310 (02) 4083020 - 8311 (02) 4083021 - 8312 (02) 4083022 - 8313 (02) 4083023 - 8314 (02) 4083024 - 8315 (02) 4083025 - 8316 (02) 4083026 - 8317 (02) 4083027 - 8318 (02) 4083028 - 8319 (02) 4083029 - 8320 (02) 4083030 - 8321 (02) 4083031 - 8322 (02) 4083032 - 8323 (02) 4083033 - 8324 (02) 4083034 - 8325 (02) 4083035 - 8326 (02) 4083036 - 8327 (02) 4083037 - 8328 (02) 4083038 - 8329 (02) 4083039 - 8330 (02) 4083040 - 8331 (02) 4083041 - 8332 (02) 4083042 - 8333 (02) 4083043 - 8334 (02) 4083044 - 8335 (02) 4083045 - 8336 (02) 4083046 - 8337 (02) 4083047 - 8338 (02) 4083048 - 8339 (02) 4083049 - 8340 (02) 4083050 - 8341 (02) 4083051 - 8342 (02) 4083052 - 8343 (02) 4083053 - 8344 (02) 4083054 - 8345 (02) 4083055 - 8346 (02) 4083056 - 8347 (02) 4083057 - 8348 (02) 4083058 - 8349 (02) 4083059 - 8350 (02) 4083060 - 8351 (02) 4083061 - 8352 (02) 4083062 - 8353 (02) 4083063 - 8354 (02) 4083064 - 8355 (02) 4083065 - 8356 (02) 4083066 - 8357 (02) 4083067 - 8358 (02) 4083068 - 8359 (02) 4083069 - 8360 (02) 4083070 - 8361 (02) 4083071 - 8362 (02) 4083072 - 8363 (02) 4083073 - 8364 (02) 4083074 - 8365 (02) 4083075 - 8366 (02) 4083076 - 8367 (02) 4083077 - 8368 (02) 4083078 - 8369 (02) 4083079 - 8370 (02) 4083080 - 8371 (02) 4083081 - 8372 (02) 4083082 - 8373 (02) 4083083 - 8374 (02) 4083084 - 8375 (02) 4083085 - 8376 (02) 4083086 - 8377 (02) 4083087 - 8378 (02) 4083088 - 8379 (02) 4083089 - 8380 (02) 4083090 - 8381 (02) 4083091 - 8382 (02) 4083092 - 8383 (02) 4083093 - 8384 (02) 4083094 - 8385 (02) 4083095 - 8386 (02) 4083096 - 8387 (02) 4083097 - 8388 (02) 4083098 - 8389 (02) 4083099 - 8390 (02) 4083100 - 8391 (02) 4083101 - 8392 (02) 4083102 - 8393 (02) 4083103 - 8394 (02) 4083104 - 8395 (02) 4083105 - 8396 (02) 4083106 - 8397 (02) 4083107 - 8398 (02) 4083108 - 8399 (02) 4083109 - 8400 (02) 4083110 - 8401 (02) 4083111 - 8402 (02) 4083112 - 8403 (02) 4083113 - 8404 (02) 4083114 - 8405 (02) 4083115 - 8406 (02) 4083116 - 8407 (02) 4083117 - 8408 (02) 4083118 - 8409 (02) 4083119 - 8410 (02) 4083120 - 8411 (02) 4083121 - 8412 (02) 4083122 - 8413 (02) 4083123 - 8414 (02) 4083124 - 8415 (02) 4083125 - 8416 (02) 4083126 - 8417 (02) 4083127 - 8418 (02) 4083128 - 8419 (02) 4083129 - 8420 (02) 4083130 - 8421 (02) 4083131 - 8422 (02) 4083132 - 8423 (02) 4083133 - 8424 (02) 4083134 - 8425 (02) 4083135 - 8426 (02) 4083136 - 8427 (02) 4083137 - 8428 (02) 4083138 - 8429 (02) 4083139 - 8430 (02) 4083140 - 8431 (02) 4083141 - 8432 (02) 4083142 - 8433 (02) 4083143 - 8434 (02) 4083144 - 8435 (02) 4083145 - 8436 (02) 4083146 - 8437 (02) 4083147 - 8438 (02) 4083148 - 8439 (02) 4083149 - 8440 (02) 4083150 - 8441 (02) 4083151 - 8442 (02) 4083152 - 8443 (02) 4083153 - 8444 (02) 4083154 - 8445 (02) 4083155 - 8446 (02) 4083156 - 8447 (02) 4083157 - 8448 (02) 4083158 - 8449 (02) 4083159 - 8450 (02) 4083160 - 8451 (02) 4083161 - 8452 (02) 4083162 - 8453 (02) 4083163 - 8454 (02) 4083164 - 8455 (02) 4083165 - 8456 (02) 4083166 - 8457 (02) 4083167 - 8458 (02) 4083168 - 8459 (02) 4083169 - 8460 (02) 4083170 - 8461 (02) 4083171 - 8462 (02) 4083172 - 8463 (02) 4083173 - 8464 (02) 4083174 - 8465 (02) 4083175 - 8466 (02) 4083176 - 8467 (02) 4083177 - 8468 (02) 4083178 - 8469 (02) 4083179 - 8470 (02) 4083180 - 8471 (02) 4083181 - 8472 (02) 4083182 - 8473 (02) 4083183 - 8474 (02) 4083184 - 8475 (02) 4083185 - 8476 (02) 4083186 - 8477 (02) 4083187 - 8478 (02) 4083188 - 8479 (02) 4083189 - 8480 (02) 4083190 - 8481 (02) 4083191 - 8482 (02) 4083192 - 8483 (02) 4083193 - 8484 (02) 4083194 - 8485 (02) 4083195 - 8486 (02) 4083196 - 8487 (02) 4083197 - 8488 (02) 4083198 - 8489 (02) 4083199 - 8490 (02) 4083200 - 8491 (02) 4083201 - 8492 (02) 4083202 - 8493 (02) 4083203 - 8494 (02) 4083204 - 8495 (02) 4083205 - 8496 (02) 4083206 - 8497 (02) 4083207 - 8498 (02) 4083208 - 8499 (02) 4083209 - 8500 (02) 4083210 - 8501 (02) 4083211 - 8502 (02) 4083212 - 8503 (02) 4083213 - 8504 (02) 4083214 - 8505 (02) 4083215 - 8506 (02) 4083216 - 8507 (02) 4083217 - 8508 (02) 4083218 - 8509 (02) 4083219 - 8510 (02) 4083220 - 8511 (02) 4083221 - 8512 (02) 4083222 - 8513 (02) 4083223 - 8514 (02) 4083224 - 8515 (02) 4083225 - 8516 (02) 4083226 - 8517 (02) 4083227 - 8518 (02) 4083228 - 8519 (02) 4083229 - 8520 (02) 4083230 - 8521 (02) 4083231 - 8522 (02) 4083232 - 8523 (02) 4083233 - 8524 (02) 4083234 - 8525 (02) 4083235 - 8526 (02) 4083236 - 8527 (02) 4083237 - 8528 (02) 4083238 - 8529 (02) 4083239 - 8530 (02) 4083240 - 8531 (02) 4083241 - 8532 (02) 4083242 - 8533 (02) 4083243 - 8534 (02) 4083244 - 8535 (02) 4083245 - 8536 (02) 4083246 - 8537 (02) 4083247 - 8538 (02) 4083248 - 8539 (02) 4083249 - 8540 (02) 4083250 - 8541 (02) 4083251 - 8542 (02) 4083252 - 8543 (02) 4083253 - 8544 (02) 4083254 - 8545 (02) 4083255 - 8546 (02) 4083256 - 8547 (02) 4083257 - 8548 (02) 4083258 - 8549 (02) 4083259 - 8550 (02) 4083260 - 8551 (02) 4083261 - 8552 (02) 4083262 - 8553 (02) 4083263 - 8554 (02) 4083264 - 8555 (02) 4083265 - 8556 (02) 4083266 - 8557 (02) 4083267 - 8558 (02) 4083268 - 8559 (02) 4083269 - 8560 (02) 4083270 - 8561 (02) 4083271 - 8562 (02) 4083272 - 8563 (02) 4083273 - 8564 (02) 4083274 - 8565 (02) 4083275 - 8566 (02) 4083276 - 8567 (02) 4083277 - 8568 (02) 4083278 - 8569 (02) 4083279 - 8570 (02) 4083280 - 8571 (02) 4083281 - 8572 (02) 4083282 - 8573 (02) 4083283 - 8574 (02) 4083284 - 8575 (02) 4083285 - 8576 (02) 4083286 - 8577 (02) 4083287 - 8578 (02) 4083288 - 8579 (02) 4083289 - 8580 (02) 4083290 - 8581 (02) 4083291 - 8582 (02) 4083292 - 8583 (02) 4083293 - 8584 (02) 4083294 - 8585 (02) 4083295 - 8586 (02) 4083296 - 8587 (02) 4083297 - 8588 (02) 4083298 - 8589 (02) 4083299 - 8590 (02) 4083300 - 8591 (02) 4083301 - 8592 (02) 4083302 - 8593 (02) 4083303 - 8594 (02) 4083304 - 8595 (02) 4083305 - 8596 (02) 4083306 - 8597 (02) 4083307 - 8598 (02) 4083308 - 8599 (02) 4083309 - 8600 (02) 4083310 - 8601 (02) 4083311 - 8602 (02) 4083312 - 8603 (02) 4083313 - 8604 (02) 4083314 - 8605 (02) 4083315 - 8606 (02) 4083316 - 8607 (02) 4083317 - 8608 (02) 4083318 - 8609 (02) 4083319 - 8610 (02) 4083320 - 8611 (02) 4083321 - 8612 (02) 4083322 - 8613 (02) 4083323 - 8614 (02) 4083324 - 8615 (02) 4083325 - 8616 (02) 4083326 - 8617 (02) 4083327 - 8618 (02) 4083328 - 8619 (02) 4083329 - 8620 (02) 4083330 - 8621 (02) 4083331 - 8622 (02) 4083332 - 8623 (02) 4083333 - 8624 (02) 4083334 - 8625 (02) 4083335 - 8626 (02) 4083336 - 8627 (02) 4083337 - 8628 (02) 4083338 - 8629 (02) 4083339 - 8630 (02) 4083340 - 8631 (02) 4083341 - 8632 (02) 4083342 - 8633 (02) 4083343 - 8634 (02) 4083344 - 8635 (02) 4083345 - 8636 (02) 4083346 - 8637 (02) 4083347 - 8638 (02) 4083348 - 8639 (02) 4083349 - 8640 (02) 4083350 - 8641 (02) 4083351 - 8642 (02) 4083352 - 8643 (02) 4083353 - 8644 (02) 4083354 - 8645 (02) 4083355 - 8646 (02) 4083356 - 8647 (02) 4083357 - 8648 (02) 4083358 - 8649 (02) 4083359 - 8650 (02) 4083360 - 8651 (02) 4083361 - 8652 (02) 4083362 - 8653 (02) 4083363 - 8654 (02) 4083364 - 8655 (02) 4083365 - 8656 (02) 4083366 - 8657 (02) 4083367 - 8658 (02) 4083368 - 8659 (02) 4083369 - 8660 (02) 4083370 - 8661 (02) 4083371 - 8662 (02) 4083372 - 8663 (02) 4083373 - 8664 (02) 4083374 - 8665 (02) 4083375 - 8666 (02) 4083376 - 8667 (02) 4083377 - 8668 (02) 4083378 - 8669 (02) 4083379 - 8670 (02) 4083380 - 8671 (02) 4083381 - 8672 (02) 4083382 - 8	

Requisites for Effective Critical Response Actions

Investment on Early Preparedness

1. Systems and Structures (LDRRMO, LDRRMC, EOC)
2. Policies and Plans (CDP, CLUP, LCCAP, LDRRMP)
3. Competency Development (Training and Research)
4. Tools, Equipment and Infrastructure
5. Data and Maps



OPERATION
L!STO

Disaster Preparedness Program – Typhoon Edition

***tamang paghahanda,
tamang aksyon!***

Local Government Units

DISASTER PREPAREDNESS MANUAL

Checklist of Early Preparations for Mayors



Typhoon Edition v2



OVERVIEW: DRRM ACTION FLOW FOR EARLY PREPAREDNESS

Early Preparedness Actions are prerequisites of the Critical Preparedness Actions. These are proactive actions taken as preparatory and necessary measures to be able to carry-out the functions during the critical period when an Advisory or Alert is issued by PAGASA. They are done during “peace time” or when no immediate threat of a disaster (for typhoons and related hazards: during dry season). These actions are taken from the requirement of the law and good practices from LGU experiences. There are four (4) general actions to be undertaken:

- A. First, create the local DRRM structures and systems to be mobilized
- B. After creating the structures and systems, institutionalize policies and plans
- C. Make sure to build the competency of the created structures through various trainings
- D. Finally, compliment the competency by purchasing and preparing the needed hardware and supplies to compliment the actions



EARLY PREPAREDNESS ACTIONS

1. SYSTEMS AND STRUCTURES

A. Create structures and systems

ORGANIZING AND PLANNING

- ☐ Sign an Executive Order creating the following organizations at the local level:
 - LDRRMC
 - LDRRMO
 - Incident Command System
 - Community of Disaster Volunteers (CDV)
 - Local Chamber of Commerce (LCC) / Network of local businesses
- ☐ Prepare the following plans:
 - LDRRMP (with contingency plans)
 - LCCAP
 - IAP
 - Business continuity plan
 - vacation Plan
- ☐ Conduct Infrastructure Audit
- ☐ Designate Emergency Operation Center (EOC)

GUIDE AND REFERENCES

- ☐ Prepare hazard, risk and flush points maps
- ☐ Develop and disseminate a community guide/family guide for disaster preparedness and response
- ☐ Update Comprehensive Land Use Plan (CLUP)-- one of the basis for the identification of highly vulnerable areas
- ☐ Check baseline data from the Infrastructure Audit
- ☐ Revisit RA 10121
- ☐ Issue Local DRR Communication protocol

2. POLICIES AND PLANS



ASSIGNMENT AND TASKING
<ul style="list-style-type: none"><input type="checkbox"/> Create position for LDRRM Officer and 3 LDRRMO staff per RA 10121<input type="checkbox"/> Assign key positions of ICS<input type="checkbox"/> Assign DRRMO/MSWDO/ CSWDO/ Municipal/City<input type="checkbox"/> Engineers to designate evacuation centers<input type="checkbox"/> Direct the Punong Barangays to create BDRRMC<input type="checkbox"/> Assign Municipal/City Engineer to:<ul style="list-style-type: none">• Put up signs/directions going to evacuation center• Put up security post• Designate shelter for livestock/animal relief park• Designate a boat garage for coastal communities• Designate evacuation center for prisoners (if prison is high-risk)

ASSIGNMENT AND TASKING
<ul style="list-style-type: none"><input type="checkbox"/> Direct the Administrator to provide SAR/SRR insurances<input type="checkbox"/> Direct Administrator to prepare a template for reporting and cancellation of travel authority<input type="checkbox"/> Direct the C/C/MSWDO to designate packing/ repacking area (warehouse)<input type="checkbox"/> Direct Administrator to prepare templates for:<ul style="list-style-type: none">• Suspension of classes• Suspension of work• Prohibition of fishing activities• Prohibition of sea voyage• Issuance of pre-emptive and forced evacuation• Declaration of State of Calamity• Post-Disaster Plan Template



A. Create
structures and
systems

B. Institution-
alize policies
and plans

ESTABLISHING LINKAGES/SUPPORT

- ☐ Establish a Memorandum of Agreement between:
 - Supermarkets (relief good and other supplies)
 - Hospitals (response, use of ambulance and management of injured persons)
 - Pharmacies (medical supplies)
 - Volunteer groups (mobilization for various operations)
 - Transportation groups (mobilization for various operations)
 - Telecommunication companies (early warning and use of communication equipment)
 - Local construction companies (SRR & clearing operations)
 - Humanitarian Organizations (retrofitting evacuation centers/structures)
 - Faith-based organizations with structures (designated/alternative evacuation centers)
 - Funeral parlors (management of the dead)

3. COMPETENCY



TRAINING INFORMATION AND AWARENESS PERSONNEL

- ☐ Conduct training on:
- Basic Orientation on CBDRRM
 - Hazard and Risk Assessment
 - Climate and Weather Forecast
 - Early Warning Systems and Monitoring
 - Infrastructure Audit
 - Risk communication
 - Media management

TRAINING DRRM AND ADMIN PERSONNEL

- ☐ Conduct training on:
- ICS
 - LDRRM Planning
 - LCCA Planning
 - Community-based monitoring system
 - Alliance-building
 - DRRMO Competency Building and Development
 - DRRMO Certification (renewable every 3 years)

TRAINING HUMANITARIAN PERSONNEL

- ☐ Conduct training on:
- Camp Management

TRAINING POST DISASTER RESPONSE PERSONNEL

- ☐ Conduct training on:
- Livelihood Training
 - Business Continuity Planning
 - RDNA
 - PDNA

TRAINING SECURITY, LIFELINE AND SRR PERSONNEL

- ☐ Conduct training on:
- Flood/swift water search and rescue
 - Basic Life Support (First-Aid)
 - Basic Sanitary Inspection and Forensic Investigation in managing the dead

4. TOOLS AND EQUIPMENT



ACQUIRING SECURITY, SEARCH AND RESCUE, MEDICAL AND CLEARING RESOURCES

- ☐ Instruct the Administrator/ DRRMO to purchase/prepare the following response equipment:

A. Supplies

- First aid kits
- Cadaver bags

B. Equipment

- Boats/Vans/Trucks/Buses
- Ambulance/amphibian vehicle/Backhoe/Dump truck/Fire trucks/Crawler/Tractor/Scoop loader (maybe borrowed from other LGUs or NGAs)
- Siren
- Megaphone
- Whistle
- Two-way radio, GPS device, and other communication equipment (consider satellite phone)
- Ropes and throw bags
- Search light
- Protective gears (helmet and life vest)
- Reflectorize vest
- Extrication kit (spine board, shovel, chainsaw, jack hammer or alternative digging device)
- Chainsaw, bolo, shovel, water pump
- Mobile water treatment
- Caution tape
- K9 Unit (if available)

C. Stockpile

- Gasoline and extra batteries
- Portable generator, solar-powered generator, and flashlights
- Potable water
- Food pack (Rice, canned goods, noodles, ready-to-eat meals)

ACQUIRING HUMANITARIAN RESOURCES

- ☐ Instruct Punong Barangays to make sure that every household has emergency balde
- ☐ (Refer to: DILG's Pampamilyang Gabaysa Panahon ng Kalamidad - www.dilg.gov.ph)
- ☐ Direct the C/MSWDO to pack relief goods (stand-by) and to prepare community kitchen supplies and equipment.
- ☐ Instruct the DRRMO to purchase/prepare the following:
 - A. Supplies
 - Registration logbook
 - B. Equipment
 - Standby vehicles
 - Megaphone
 - Whistle
 - Two-way radio and other communication equipment
 - Flashlight and extra batteries
 - C. Stockpile
 - First aid kits/medicines
 - Food pack (Rice, canned goods, noodles, ready-to-eat meals)
 - Potable water
 - Hygiene kit (Soap, shampoo, alcohol, toothbrush, toothpaste, sanitary pads, deodorant)
 - Clothing (Jacket, raincoat, hard hat, boots)
 - Gasoline and extra batteries
 - Portable generator and gasoline
 - Beds and beddings
 - Portable toilets
 - Mosquito nets
- ☐ Direct the Administrator to purchase or coordinate with organizations that may lend a mobile community kitchen during or in the aftermath of the disaster

ACQUIRING INFORMATION AND AWARENESS RESOURCES

☐ Purchase/Prepare the following early warning equipment

A. Equipment

- Rain gauge
- Water level markers
- Wind vane
- Bells (you can partner with the local church to use the church bells for alarm too)
- Centralized Hotline (operated and monitored by Command Center)
- Vehicles
- Siren/Batingaw
- Telephone/fax machine/internet connection
- Megaphone
- Two-way radio, GPS device, and other communication equipment (consider satellite phone)
- Flashlight and extra batteries
- Transistor Radio (single frequency)
- Satellite phones

B. Stockpile

- Portable generator and gasoline

☐ Direct the Municipal Engineer to create and designate public weather bulletin boards and an area for press conference/briefing

- Secure hazard and risk maps, and potential flash points maps
- Directory/contact numbers of key local and national DRRM officials, TV and radio stations, school principals/administrators
- Template of PSAs (Public Service Announcements)

Local Government Units

DISASTER PREPAREDNESS MANUAL

Checklist of Minimum Critical Preparations for Mayors



Typhoon Edition v2





CHECKLIST

**MINIMUM CRITICAL
PREPAREDNESS ACTIONS**

BOX A: LIST OF DIRECTIVES DURING A DISASTER

- ☐ Cancel Travel Authorities of Personnel
- ☐ Prepare pre-disaster risk assessment
- ☐ Heighten response and early warning
- ☐ Monitor Typhoon Path and intensity



BOX B: MEETING AGENDA IN CONVENING LDRRMC

- ☐ Typhoon Path and possible impact/s
- ☐ Estimate number of possible affected communities
- ☐ Incident Command System
 - ☐ Identify Incident Commander
- ☐ Composition and tasking
 - ☐ Administrative and logistical support
 - ☐ Security, lifeline and SRR Cluster
 - ☐ Humanitarian Cluster
 - ☐ Information and Awareness Cluster
- ☐ Availability of LDRRM Fund
- ☐ Prepositioning and readiness of resources
- ☐ Daily briefing, debriefing updates and schedules

BOX C: LIST OF RESOURCES NEEDED BY CLUSTER 1 (SRR TEAM)

Supplies

- ☐ First aid kits and vaccines
- ☐ Cadaver bags

Equipment

- ☐ Boats/Vans/Trucks/Buses
- ☐ Ladder
- ☐ Ambulance/Amphibian vehicle/
Backhoe/Dump truck/Fire trucks/
Crawler/Tractor/Scoop loader
(maybe borrowed from other LGUs
or NGAs)
- ☐ Siren
- ☐ Megaphone
- ☐ Whistle
- ☐ Two-way radio, GPS device, and
other communication equipment
(consider satellite phone)
- ☐ Ropes and throw bags
- ☐ Search light

- ☐ Protective gears (helmet and
life vest)
- ☐ Reflectorize vest
- ☐ Extrication kit (spine board,
shovel, chainsaw, jack hammer
or alternative digging device)
- ☐ Chainsaw, bolo, shovel, water
pump
- ☐ Mobile water treatment
- ☐ Caution tape
- ☐ K9 unit (if available)

Stockpile

- ☐ Gasoline and extra batteries
- ☐ Portable generator, solar-
powered generator, and
flashlights
- ☐ Potable water
- ☐ Food pack (Rice, canned
goods, noodles, ready-to-eat
meals)



BOX D: LIST OF RESOURCES NEEDED BY CLUSTER 2
(HUMANITARIAN TEAM)

Supplies

- ☐ Registration logbook

Equipment

- ☐ Standby vehicles
- ☐ Megaphone
- ☐ Whistle
- ☐ Two-way radio and other communication equipment
- ☐ Flashlight
- ☐ TV or radio

Stockpile

- ☐ First aid kits/medicines
- ☐ Food pack (Rice, canned goods, noodles, ready-to-eat meals)
- ☐ Potable water
- ☐ Hygiene kit (Soap, shampoo, alcohol, toothbrush, toothpaste, sanitary pads, deodorant)
- ☐ Clothing (jacket, raincoat, hard hat, boots)
- ☐ Gasoline and extra batteries
- ☐ Portable generator and flashlights
- ☐ Beds and beddings
- ☐ Portable toilets
- ☐ Mosquito nets

BOX E: LIST OF RESOURCES NEEDED BY CLUSTER 3
(INFORMATION AND AWARENESS TEAM)

Data and Information

- ☐ Hazard and risk maps, and potential flush points maps
- ☐ Directory/contact numbers of key local and national DRRM officials, TV and radio stations, school principals/administrators
- ☐ Advisory from PAGASA
- ☐ Template of PSAs (Public Service Announcements)

Equipment

- ☐ Centralized Hotline (operated and monitored by Command Center)
- ☐ Vehicles
- ☐ Siren/Batingaw
- ☐ Telephone/fax machine/internet connection
- ☐ Megaphone
- ☐ Two-way radio, GPS device, and other communication equipment (consider satellite phone)
- ☐ Flashlight
- ☐ Transistor Radio (single frequency)

Stockpile

- ☐ Gasoline and extra batteries
- ☐ Portable generator and flashlights

BOX F: GUIDELINES ON UTILIZING LDRRM FUND

Source: DILG-DBM-NDRRMC Joint Memorandum Circular No. 2013-1 dated March 25, 2013

- ☐ Provides that the General Fund amounting to not less than five (5%) of the estimated revenue from regular sources shall be set aside for LDRRM Fund. 30% of the LDRRMF shall be set aside for the Quick Response Fund (QRF) and 70% for disaster prevention and mitigation, response, rehabilitation and recovery.
- ☐ The release and use of the 30% QRF shall be supported of the local sanggunian declaring LGU under the state of calamity or a presidential declaration of state of calamity upon recommendation of the NDRRMC.

BOX G: HIGHLY VULNERABLE COMMUNITIES

include but are not limited to:

- ☐ Landslide prone
- ☐ Coastal and island communities
- ☐ Communities near river banks and waterways
- ☐ Flood prone



BOX H: GUIDELINES FOR THE DEPLOYMENT OF CLUSTER 1 TEAMS

Upon alert/before the typhoon

Search, Rescue and Retrieval

- ☐ Deliver potable water to the evacuation center
- ☐ Provide updates on readiness of personnel and equipment
- ☐ Mobilize volunteers (Tanods, BPATs, Kabalikat, Fire Brigade, Red Cross, NSTP, etc.)
- ☐ Conduct rescue and evacuation

Security Teams

- ☐ Provide updates on status of public safety
- ☐ Maintain peace and order to prevent looting
- ☐ Secure jail facilities
- ☐ Patrol communities and evacuation centers

Medical Teams

- ☐ Provide medical assistance to evacuation center and affected areas
- ☐ Ensure sufficient medicine/supplies in the evacuation centers and affected areas
- ☐ Provide psycho-social care needs to affected communities as needed

Clearing Operations Teams

- ☐ Take down billboards
- ☐ Prune trees
- ☐ Clear canals
- ☐ Ensure unobstructed routes of other teams for the faster delivery of relief goods/supplies/equipment
- ☐ Assess other structures or places as additional to the pre-identified evacuation centers/warehouses
- ☐ Ensure adequate markers that would guide evacuees and operation teams

DURING THE TYPHOON

- ☐ Advise all teams to standby



AFTER THE TYPHOON

Search, Rescue and Retrieval

- ☐ Deliver potable water to the evacuation center
- ☐ Continue providing updates on readiness of personnel and equipment
- ☐ Continue mobilizing volunteers (Tanods, BPATs, Kabalikat, Fire Brigade, Red Cross, NSTP, etc.)
- ☐ Continue conduct of rescue and evacuation
- ☐ Provide head count of injured, missing and other casualties
- ☐ Conduct retrieval of dead bodies
- ☐ Coordinate with funeral parlors to manage the dead

Security Teams

- ☐ Continue providing updates on status of public safety
- ☐ Continue maintaining peace and order to prevent looting
- ☐ Continue securing jail facilities
- ☐ Continue patrolling communities

Medical Teams

- ☐ Coordinate with district or provincial hospitals for admission of injured individuals
- ☐ Continue providing medical assistance to evacuation center and affected areas
- ☐ Continue ensuring sufficient medicines/supplies in the evacuation centers and affected areas
- ☐ Continue providing psycho-social care needs to affected communities as needed

Clearing Operations Teams

- ☐ Cut uprooted trees
- ☐ Start clearing roads
- ☐ Assist SRR teams in searching for victims trapped in collapsed structures
- ☐ Continue ensuring the safety of routes of the returning evacuees
- ☐ Coordinate with electric and water cooperatives to repair damaged water and power lines

BOX I: EVACUATION CENTER STANDARDS

A. Structure and Location:

- ☐ Permanent and disaster-resilient evacuation centers (multi-purpose centers) at the provincial/municipality/city/barangay
- ☐ Animals – Relief park (separate space or structure for livestock, domestic animals and crops)
- ☐ Not in high-risk areas (refer to your risk map)
- ☐ Accessibility for people
- ☐ At most 6 families per evacuation room (40m²)

B. Amenities:

- ☐ Toilet for men and women (1:50)/Additional portable toilets
 - Separate toilet for PWDs
 - Consider designated area for LGBTs and assigned bathrooms (if available)
 - Well-lighted
 - Can be locked from inside
 - With proper ventilation
 - With water supply, pail/dipper and soap
- ☐ Generator sets
- ☐ Child, women, elderly and PWDs friendly space
- ☐ Assembly area for relief distribution
- ☐ Consider designating couples/conjugal room
- ☐ Community kitchen
 - Stove/fuel
 - Kitchen utensils
 - Water facilities
 - Laundry space
- ☐ Boat garage for coastal barangays



C. Services:

- On Health and Nutrition
 - ☐ Health Station/Clinic; Breastfeeding Room
 - ☐ Basic drugs, medicines, medical supplies, and equipment inside evacuation center (medical teams: doctors, nurses, midwives)
 - ☐ Hygiene kit (toothpaste, toothbrush, soap, shampoo, sanitary pad, diaper)
 - ☐ Food packs (canned goods, ready-to-eat meals, noodles, water, milk for infants)
 - ☐ Contraceptives (at least make available when needed/inform that there are available contraceptives)
 - ☐ Crew (Emergency Medical Services)
 - ☐ Trained psycho-social support responders (2 per LGU-PCMB) c/o DOH
- On Security
 - ☐ 1 Police Officer
 - ☐ 20 Tanods (BPAT/BERT)
 - ☐ Designated parking space/helibase



BOX J: MAYOR'S SCRIPT FOR ALERT/ADVISORY FOR RADIO ANNOUNCEMENT

"Mga Kababayan, ako po si Mayor <sabihin ang pangalan>. Seryosong bababla po ito. Ayon sa PAGASA, may bagyong <pangalan ng bagyo> na kakapasok lang sa Philippine Area of Responsibility. Dadating ito sa ating bayan sa <petsa at posibleng oras ng pagdating ng bagyo>. Ibig sabihin, tatamaan tayo sa <araw>. Sa kanyang takbo na <bilis ng bagyo> at sa lakas nitong <lakas ng bagyo> kph, ito'y tulad ng bagyong <nakaraang bagyo na katulad ng paparating>. Kaya kailangan ng <banggiting ang naka-listang mga aksyon sa ALPHA/BRAVO/CHARLIE>. Bukas, sa ganito ding oras, ako'y muling magkakaroon ng iba pang detalye at babala sa bagyong ito. Salamat po."

Recall a typhoon that has previously affected the LGU and compare it with the present typhoon. This is so the community has a visual reference on the intensity and magnitude of the typhoon.

Note: This Script may be converted into your local dialect/s.

BOX K: ACCESS GUIDE TO WEATHER BULLETIN RELATED WEBSITES

WEBSITE	SITE INFORMATION CONTENT
Weather Advisory/Bulletin	
www.pagasa.dost.gov.ph	<ul style="list-style-type: none"> • Weather Warning/Advisory • Hydrological Info/Warning • Climate Advisory • Astronomical Update
www.climatex.ph	<ul style="list-style-type: none"> • Latest Rain Forecast
www.jma.go.jp/jma/indexe.html	<ul style="list-style-type: none"> • Weather Warnings/Advisories • Tsunami Warnings/Advisories • Weather Forecasts and Analysis • Climate Statistics • Oceanographic Observation • State of the Ocean Climate • Atmospheric Environment • Oceanic Carbon Cycle • Sea Waves Around Japan/Western North Pacific
www.accuweather.com	<ul style="list-style-type: none"> • Local Weather
www.weather.com.ph	<ul style="list-style-type: none"> • Weather Warnings (Wind and Rain) • Weather Maps (Temperature, Pressure and Satellite)
www.noah.dost.gov.ph	<ul style="list-style-type: none"> • Rain Forecast • Weather Outlook • PAGASA Cyclone Update
www.usno.navy.mil/jtwc	<ul style="list-style-type: none"> • Warning Graphic Legend (Cone)



BOX K (CONT'N): ACCESS GUIDE TO WEATHER BULLETIN
RELATED WEBSITES

Weather News Bulletin	
www.gmanetwork.com/news/weather	<ul style="list-style-type: none">• Hourly Forecast• 5-day Forecast• Weather Update• Weather News
www.abs-cbnnews.com/weather	<ul style="list-style-type: none">• Hourly Forecast• Current Condition• Weather News• 10-day Forecast
http://news.ptv.com.pk/weather.asp	<ul style="list-style-type: none">• Today's Weather
www.interaksyon.com/weather/	<ul style="list-style-type: none">• Weekly Forecast
www.rappler.com/nation/special-coverage/weather-alert	<ul style="list-style-type: none">• Latest Weather News• National Weather Forecast
http://www.rappler.com/move-ph/issues/disasters	<ul style="list-style-type: none">• News and Feature Articles on DRRM (preparedness, Response and Recovery)• Knowledge Base of Disasters• Hazard Maps• Discussions and Debates

Local Government Units

DISASTER PREPAREDNESS MANUAL

Checklist for MLGOOs, COPs and FMs



Typhoon Edition v2



REFERENCES FOR MLGOOS

BOXES A, B, C, D, E, F, G, H, I

Pre-Disaster Risk Assessment in DILG



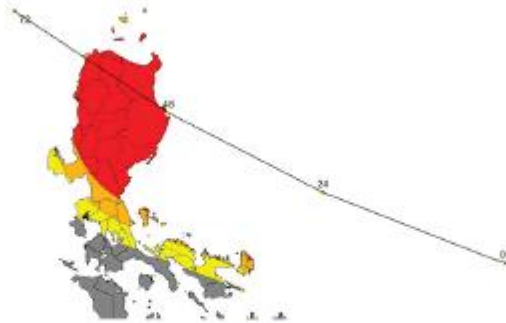
Dir. Edgar Allan Tabell
Chief, Central Office Disaster Information Coordinating Center
Department of the Interior and Local Government



PDRA in DILG

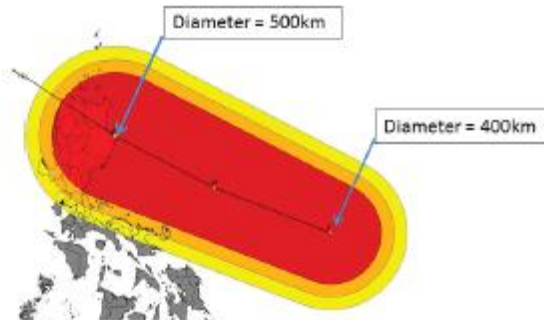
**CODIX monitors
weather advisories /
bulletins issued by
PAGASA**

TS LUIS



ALPHA – 100km away from Charlie
BRAVO – 50km away from Charlie
CHARLIE – Critical Area

TS LUIS



ALPHA – 100km away from Charlie
BRAVO – 50km away from Charlie
CHARLIE – Critical Area

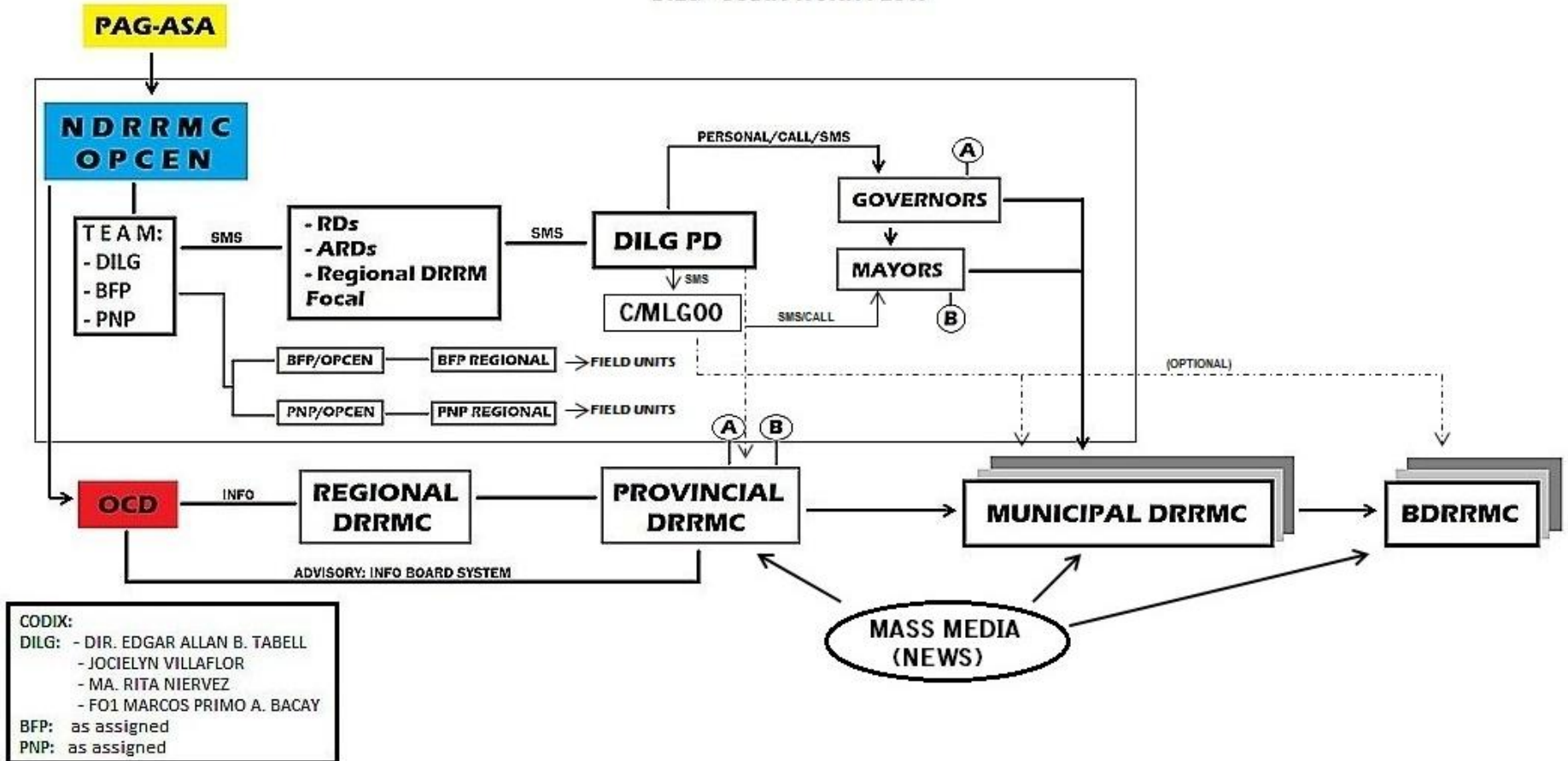
CRITICAL AREAS			
ALERT LEVEL		PROVINCES	POTENTIAL IMPACTS
ALERT LEVEL C	RAIN <ul style="list-style-type: none"> • 10-30 mm/hr • Heavy to intense 	<ul style="list-style-type: none"> • Abra, Apayao • Aurora, Benguet • Cagayan, Ifugao • Ilocos Norte & Sur • Isabela, Kalinga • La Union 	<ul style="list-style-type: none"> • Comparable to PITANG 1970 • Heavy damage to agriculture • Travel by land, sea and air is dangerous
	WIND <ul style="list-style-type: none"> • 120-150 kph 	<ul style="list-style-type: none"> • Mountain Province • Nueva Vizcaya • Pangasinan • Quezon • Quirino 	<ul style="list-style-type: none"> • Some large trees may be uprooted • Moderate to heavy disruption of electrical power
ALERT LEVEL B	RAIN <ul style="list-style-type: none"> • 10-20 mm/hr • Moderate to Heavy 	<ul style="list-style-type: none"> • Bulacan, Nueva Ecija • Camarines Norte & Sur • Catanduanes • Pampanga • Rizal 	<ul style="list-style-type: none"> - Moderate damage to agriculture - Travel by all types of sea vessels is risky - Travel by aircrafts is risky
	WIND <ul style="list-style-type: none"> • 30-60 kph 		<ul style="list-style-type: none"> - Few large trees may be uprooted - Some iron roofing may fall off
ALERT LEVEL A	<ul style="list-style-type: none"> • RAIN • 5-10 mm/hr • Moderate to Heavy 	<ul style="list-style-type: none"> • Albay • Bataan • Cagayan • Cavite • Laguna • Metro Manila 	

PDRA in DILG

CODIX alerts all concerned LGUs thru field offices, the PNP and BFP NHQs, and the SILG

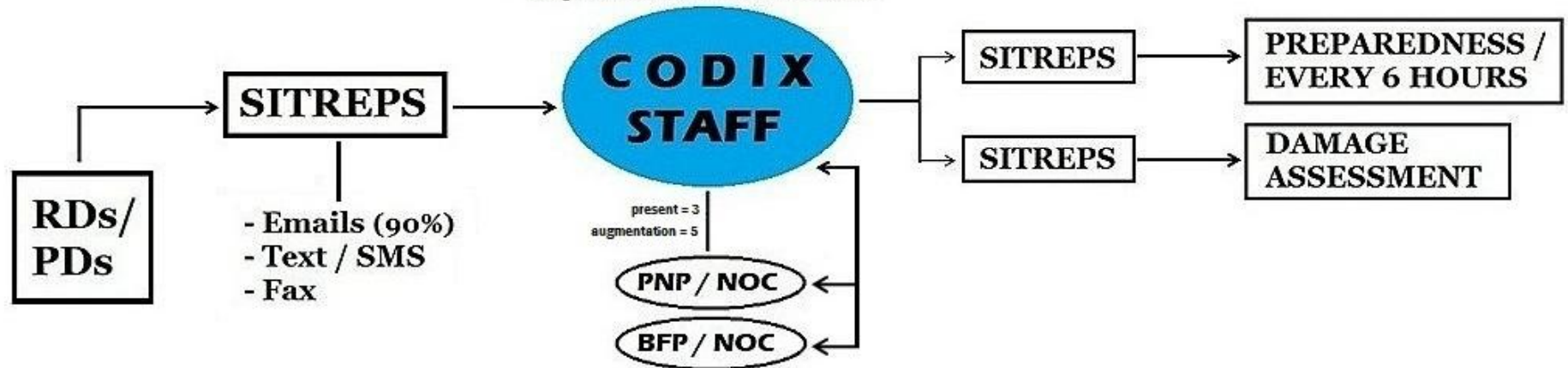
- LGU Disaster Preparedness Manual
- The “hotdog mechanism” data from PAGASA

DILG - CODIX WORK FLOW



FEEDBACK

dilgcodix@rocketmail.com



PDRA in DILG

Early preparedness actions

- LGU

Critical preparedness actions

- LGU
- MLGOO
- PNP
- BFP

Early preparedness actions

- ➔ **Proactive actions taken as preparatory and necessary measures to be able to carry-out the functions during the critical period**
- ➔ **These are done when there is no immediate threat of a disaster**

Critical preparedness actions

- ➔ **Early Preparedness Actions must have been done prior as part of the preparatory measures, before any severe weather bulletin has been issued**

Critical preparedness actions

➔ **These actions are categorized in three (3) general action areas:**

1. PREPARE
2. RESPOND
3. MONITOR/REPORT

Critical preparedness actions

➔ The intensity of the typhoon is classified in this checklist, as described below:

Charlie – High-risk; Critical area or Breadth of the storm

Bravo – Medium-risk; 1-50 km away from Charlie

Alpha – Low-risk; 51-100 km away from Charlie

LGU BASELINE DATA – R13

Salamat...

